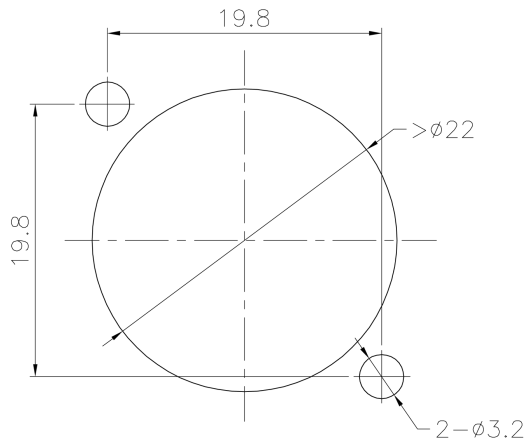




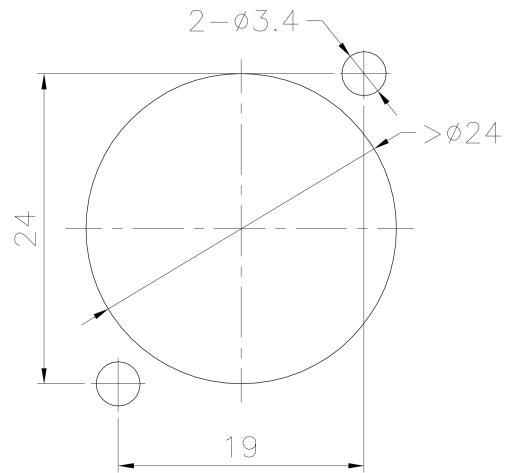
PANEL CUTOUTS

XLR Panel Cutouts

E/B Series



JL/JLX Series



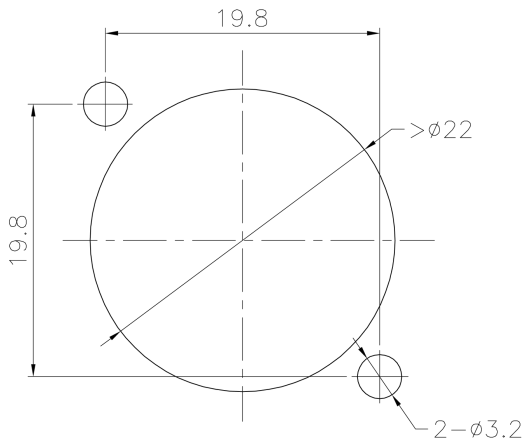
XLR Panel Cutout Crosses

Io Audio Technologies	Neutrik Series Cutout	Switchcraft Series Cutout	Amphenol Series Cutout
E/B Series	A/AA/B Series	N/A	AC Series
J/JL/JLX Series	D/DL/DLX Series	E/EH/PD Series	AX/AC "Z" Series

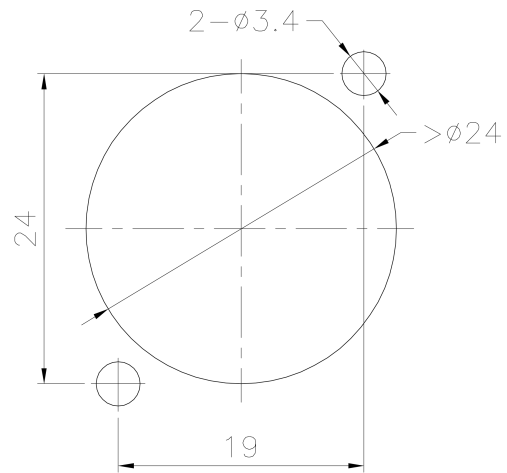
PANEL CUTOUTS

Speakerlatch, Powerlatch, & Etherlatch Panel Cutouts

B Series Etherlatch



**J Series
Powerlatch, Speakerlatch, & Etherlatch**



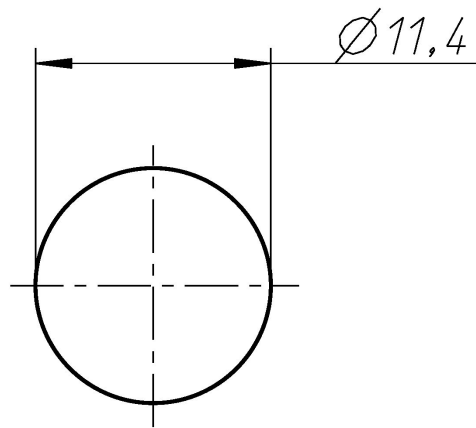
Speakerlatch, Powerlatch, & Etherlatch Panel Cutout Crosses

Io Audio Technologies	Neutrik Series Cutout	Switchcraft Series Cutout	Amphenol Series Cutout
B Series	A/AA/B Series	N/A	AC Series
J Series	D/DL Series	E/EH/PD Series	AX/AC "Z" Series

PANEL CUTOUTS

¼" Jack Panel Cutouts

TJ/KJ Series



¼" Jack Panel Cutout Crosses

Io Audio Technologies	Neutrik Series Cutout	Switchcraft Series Cutout	Amphenol Series Cutout
TJ/KJ Series	M/Slim Series	N/A	ACJS Series