



AUDIO
TECHNOLOGIES®



PRODUCT SELECTOR GUIDE

IOAUDIOTECH.COM

POPULAR MARKETS:



AEROSPACE / AVIATION

Control & Automation, Networked
Communication, Aircraft Restoration



AGRICULTURE

Vertical Farming, Water Testing, Treatment



APPLIANCES

Commercial Ovens, Coffee Machines,
Washing Machines, Dryers



AUTOMOTIVE

Buses, Shuttles



BROADCASTING

Radio Stations, Broadcast Trucks



COMMUNICATIONS

Specialized Communication



GAMES & SIMULATORS

Control, Testing/Development



INSTALLATIONS

Commercial/Residential
Low Voltage Integrators



MEDICAL

Respirators, Breathing Apparatus,



MILITARY / DEFENSE



PRO AV / THEME PARKS

Live Sound, Studio, Professional
Lighting, Architectural Lighting,
Control, Digital Audio, AVoIP



XLR CABLES

Part Number	Series	Shield	Insulation	Number of Conductors	AWG	Jacket	Lengths Available
IO-XLR3-XX-E	Performance	Spiral BC	PE	2 Plus Shield	24	PVC	3, 6, 10, 25, 50, & 100 ft
IO-XLR3-XX-P	Professional	Braided TC	XLPE	2 Plus Shield	23	PVC	3, 6, 10, 25, 50, & 100 ft
IO-XLR3-YY-X	Premium	(1) Braided TC, (1) Braided BC	LDPE	4 Plus Shield	24	PVC with Braided Nylon Sleeve	3, 6, 10, 25, 50, & 100 ft

DMX CABLES

Part Number	Shield	Insulation	Number of Conductors	Characteristic Impedance	Drain Wire	AWG	Lengths Available
IO-DMX5-XX-P	(1) Braided TC, (1) Aluminum Foil	PE	4 Plus Shield	120 OHMS	7/0.20 TC	24	1, 3, 6, 10, 25, 50, & 100 ft

ETHERLATCH CABLES

Part Number	Jacket	Shield	Insulation	Number of Conductors	Conductor Detail	AWG	Lengths Available
IO-CAT5-XX-P	Black, PVC	CPE	PE	8 Plus Shield	Stranded BC	24	10, 25, 50, & 100 ft
IO-CAT6-XX-P	Blue, PVC	(1) Braided Magnesium Alloy (2) Aluminum Foil	FPE	8 Plus Shield	Solid BC	23	10, 25, 50, 100, 150, 200, & 300 ft

POWERLATCH CABLES

Part Number	Current & Voltage Rating	Number of Conductors	Conductor Detail	AWG	Connector Ends	Jacket	UL Approval	Lengths Available
IO-PRCPTP-14-XX-P	15A, 125V AC	2 Plus Ground	ABC	14	Powerlatch to Powerlatch	SJTW PVC	Yes	3, 6, 10, & 25 ft
IO-PRCPTE-14-XX-P	15A, 125V AC	2 Plus Ground	ABC	14	Powerlatch to Edison	SJTW PVC	Yes	3, 10, & 25 ft



T3MCH-R



T3MCH-2R



T3MCH



T3MBK



M3MBL

BALANCED PATCH CABLES

The following specs apply to all Balanced Patch Cables

Part Numbers	IO-BP176XXX-T3MCH-R	IO-BP176XXX-T3MCH-2R	IO-BP176XXX-M3MBL	IO-BP176XXX-T3MBK	IO-BP176XXX-T3MCH
Shield	(1) Braided TC (1) Aluminum Foil				
Insulation	XLPE				
Number of Conductors	2 Plus Ground				
Capacitance	≤ 14.4 pF/Ft				
AWG	26				
Sizes Available	3, 5, 10, 15, 20, 25 & 50 ft				

INSTRUMENT CABLES

The following specs apply to all Instrument Cables

Part Numbers	IO-IC109XXX-M2MBL*	IO-IC109XXX-T2MBK*	IO-IC109XXX-T2MCH*	IO-IC109XXX-T2MCH-R*	IO-IC109XXX-T2MCH-2R*
Shield	Spiraled BC				
Insulation	Conductive PE				
Number of Conductors	1 Plus Shield				
Capacitance	≤ 33.3 pF/Ft				
AWG	20				
Sizes Available	3, 5, 10, 15, 20 & 25 ft				



A12416
(B100)



A12326
(B500)



A12626
(B1000)



A02016
(U100)



A12416
(B100)



E4261S-5ECMR



E4242S-5ECMR



E4231S-6LZH



E4242S-6CMR

MULTI-CONDUCTOR BULKWIRE

Part Number	Series	Number of Conductors	Conductor Construction	Shield	AWG	Length	Jacket & Color
IO-A12416-500SP	B100	2	Stranded	Spiraled TC	24	500 ft Spool	Black PVC
IO-A12326-500SP	B500	2	Stranded	Braided TC	23	500 ft Spool	Black PVC
IO-A12626-500SP	B1000	2	Stranded	Braided TC & Aluminum Foil	26	500 ft Spool	Black PVC
IO-A02016-100SP	U100	1	Stranded	Spiraled BC	20	100 ft Spool	Black PVC
IO-A02016-500SP	U100	1	Stranded	Spiraled BC	20	500 ft Spool	Black PVC
IO-D22428-500SP	D1000	4	Stranded	Braided TC & Aluminum Foil	24	500 ft Spool	Black PVC

NETWORK BULKWIRE

Part Number	Type	Number of Conductors	Conductor Construction	Shield	AWG	Length	Jacket & Color
IO-E4261S-5ECMR-1000B	CAT 5E	8	Solid	Transparent Paper & Aluminum Foil	26	1000 ft Pull Box	Gray PVC, CMR
IO-E4242S-5ECMR-1000B	CAT 5E	8	Stranded	Aluminum Mylar	24	1000 ft Pull Box	Black PVC, CMR
IO-E4231S-6LZH-1000B	CAT 6	8	Solid	Aluminum Mylar	23	1000 ft Pull Box	Black PVC, LSZH
IO-E4242S-6CMR-1000B	CAT 6	8	Stranded	Aluminum Mylar	24	1000 ft Pull Box	Black PVC, CMR



TINY XLR CABLE CONNECTORS

Part Number	Number of Pins	Gender	Contact Plating	Wiring	Wiresize (Max O.D.)	Cable O.D (Min - Max)	Body Color
IO-TXLR3-F	3	Female	Gold	Solder Cups	0.5mm	2mm - 3.2mm	Nickel and Black
IO-TXLR3-M	3	Male	Gold	Solder Cups	0.5mm	2mm - 3.2mm	Nickel and Black
IO-TXLR4-F	4	Female	Gold	Solder Cups	0.5mm	2mm - 3.2mm	Nickel and Black
IO-TXLR4-M	4	Male	Gold	Solder Cups	0.5mm	2mm - 3.2mm	Nickel and Black

TINY XLR CHASIS CONNECTORS

Part Number	Number of Pins	Gender	Contact Plating	Wiring	Wiresize (Max O.D.)	Body Color
IO-TXLR3-F-JLX	3	Female	Gold	Solder Cups	0.5mm	Nickel
IO-TXLR4-F-JLX	4	Female	Gold	Solder Cups	0.5mm	Nickel
IO-TXLR3-M-PH	3	Male	Gold	Horizontal PCB	0.5mm	Nickel
IO-TXLR3-M-PS	3	Male	Gold	Solder Cups	0.5mm	Nickel
IO-TXLR3-M-PS-1	3	Male	Gold	Solder Cups	0.5mm	Nickel
IO-TXLR3-M-PV	3	Male	Gold	Vertical PCB	0.5mm	Nickel
IO-TXLR4-M-PS	4	Male	Gold	Solder Cups	0.5mm	Nickel
IO-TXLR4-M-PS-1	4	Male	Gold	Solder Cups	0.5mm	Nickel
IO-TXLR4-M-PV	4	Male	Gold	Vertical PCB	0.5mm	Nickel



XLR CABLE CONNECTORS

Part Number	Number of Pins	Gender	Contact Plating	Wiring	Capacitance Between Contacts	Wiresize (Max O.D.)	Cable O.D (Min - Max)	Body Color
IO-XLR3-M-BK	3	Male	Silver	Solder Cups	< 2 pF	2.00mm	3.5mm - 8.0mm	Black
IO-XLR3-F-BK	3	Female	Silver	Solder Cups	< 2 pF	2.50mm	3.5mm - 8.0mm	Black
IO-XLR3-M-BKAU	3	Male	Gold	Solder Cups	< 2 pF	2.00mm	3.5mm - 8.0mm	Black
IO-XLR3-F-BKAU	3	Female	Gold	Solder Cups	< 2 pF	2.50mm	3.5mm - 8.0mm	Black
IO-XLR4-M-BK	4	Male	Silver	Solder Cups	< 2 pF	1.25mm	3.5mm - 8.0mm	Black
IO-XLR4-F-BK	4	Female	Silver	Solder Cups	< 2 pF	1.25mm	3.5mm - 8.0mm	Black
IO-XLR4-M-BKAU	4	Male	Gold	Solder Cups	< 2 pF	1.25mm	3.5mm - 8.0mm	Black
IO-XLR4-F-BKAU	4	Female	Gold	Solder Cups	< 2 pF	1.25mm	3.5mm - 8.0mm	Black
IO-XLR5-M-BK	5	Male	Silver	Solder Cups	< 2 pF	1.25mm	3.5mm - 8.0mm	Black
IO-XLR5-F-BK	5	Female	Silver	Solder Cups	< 2 pF	1.25mm	3.5mm - 8.0mm	Black
IO-XLR5-M-BKAU	5	Male	Gold	Solder Cups	< 2 pF	1.25mm	3.5mm - 8.0mm	Black
IO-XLR5-F-BKAU	5	Female	Gold	Solder Cups	< 2 pF	1.25mm	3.5mm - 8.0mm	Black

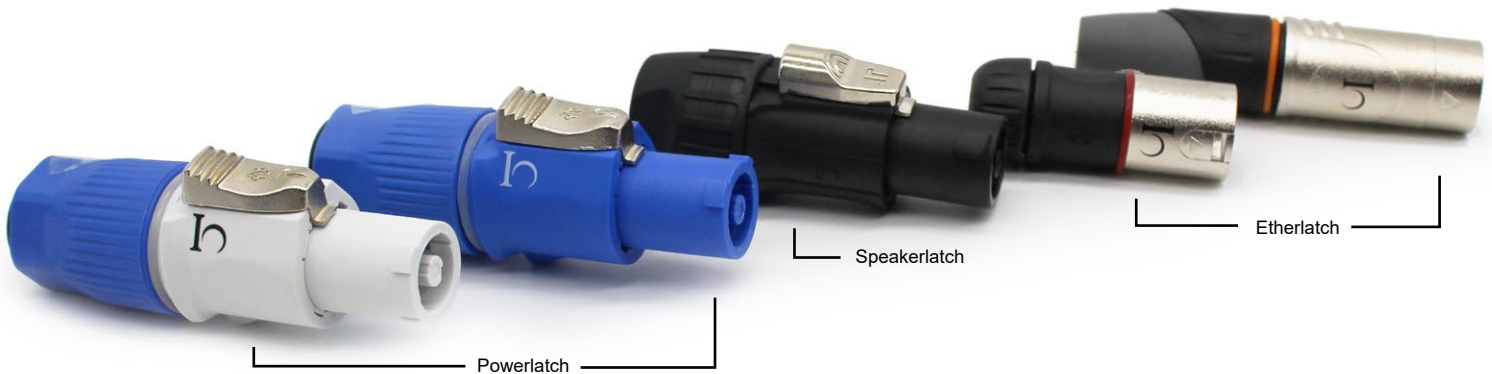


XLR CHASSIS CONNECTORS (PCB MOUNT)

Part Number	Series	Number of Contacts	Gender	Mounting Direction	Contact Plating	Wiring	Capacitance Between Contacts
IO-XLR3-F-BH	B Series	3	Female	Rear	Gold	Horizontal PCB	≤ 2 pF
IO-XLR3-M-BH	B Series	3	Male	Rear	Gold	Horizontal PCB	≤ 2 pF
IO-XLR3-F-BV	B Series	3	Female	Rear	Gold	Vertical PCB	≤ 2 pF
IO-XLR3-M-BV	B Series	3	Male	Rear	Gold	Vertical PCB	≤ 2 pF
IO-XLR4-F-BH	B Series	4	Female	Rear	Gold	Horizontal PCB	≤ 2.5 pF
IO-XLR4-M-BH	B Series	4	Male	Rear	Gold	Horizontal PCB	≤ 2.5 pF
IO-XLR4-F-BV	B Series	4	Female	Rear	Gold	Vertical PCB	≤ 3.2 pF
IO-XLR4-M-BV	B Series	4	Male	Rear	Gold	Vertical PCB	≤ 3.2 pF
IO-XLR5-F-BH	B Series	5	Female	Rear	Gold	Horizontal PCB	< 2 pF
IO-XLR5-M-BH	B Series	5	Male	Rear	Gold	Horizontal PCB	< 2 pF
IO-XLR5-F-BV	B Series	5	Female	Rear	Gold	Vertical PCB	< 2 pF
IO-XLR5-M-BV	B Series	5	Male	Rear	Gold	Vertical PCB	< 2 pF
IO-XLR3-F-EH	E Series	3	Female	Rear	Gold	Horizontal PCB	≤ 2 pF
IO-XLR3-M-EH	E Series	3	Male	Rear	Gold	Horizontal PCB	≤ 2 pF
IO-XLR3-F-EV	E Series	3	Female	Rear	Gold	Vertical PCB	≤ 2 pF
IO-XLR3-M-EV	E Series	3	Male	Rear	Gold	Vertical PCB	≤ 2 pF
IO-XLR4-F-EH	E Series	4	Female	Rear	Gold	Horizontal PCB	≤ 3.3 pF
IO-XLR4-M-EH	E Series	4	Male	Rear	Gold	Horizontal PCB	≤ 3.3 pF
IO-XLR4-F-EV	E Series	4	Female	Rear	Gold	Vertical PCB	≤ 3.4 pF
IO-XLR4-M-EV	E Series	4	Male	Rear	Gold	Vertical PCB	≤ 3.4 pF
IO-XLRS-F-EH	E Series	5	Female	Rear	Gold	Horizontal PCB	< 2 pF
IO-XLRS-M-EH	E Series	5	Male	Rear	Gold	Horizontal PCB	< 2 pF
IO-XLRS-F-EV	E Series	5	Female	Rear	Gold	Horizontal PCB	< 2 pF
IO-XLRS-M-EV	E Series	5	Male	Rear	Gold	Horizontal PCB	< 2 pF

XLR CHASSIS CONNECTORS (SOLDER CUPS)

Part Number	Series	Number of Contacts	Gender	Mounting Direction	Contact Plating	Wiring	Capacitance Between Contacts	Wiresize (Max O.D.)	Shell Plating/ Finish
IO-XLR3-F-JL	JL Series	3	Female	Front	Silver	Solder Contacts	≤ 2 pF	2.5mm	Nickel
IO-XLR3-M-JL	JL Series	3	Male	Front	Silver	Solder Contacts	≤ 2 pF	2.0mm	Nickel
IO-XLR3-F-BK-JL	JL Series	3	Female	Front	Silver	Solder Contacts	≤ 2 pF	2.5mm	Black
IO-XLR3-M-BK-JL	JL Series	3	Male	Front	Silver	Solder Contacts	≤ 2 pF	2.0mm	Black
IO-XLR4-F-JL	JL Series	4	Female	Front	Silver	Solder Contacts	≤ 2 pF	1.75mm	Nickel
IO-XLR4-M-JL	JL Series	4	Male	Front	Silver	Solder Contacts	≤ 2 pF	1.20mm	Nickel
IO-XLR4-F-BK-JL	JL Series	4	Female	Front	Silver	Solder Contacts	≤ 2 pF	1.75mm	Black
IO-XLR4-M-BK-JL	JL Series	4	Male	Front	Silver	Solder Contacts	≤ 2 pF	1.20mm	Black
IO-XLR5-F-JL	JL Series	5	Female	Front	Silver	Solder Contacts	< 2.5 pF	1.0mm	Nickel
IO-XLR5-M-JL	JL Series	5	Male	Front	Silver	Solder Contacts	< 2.5 pF	1.0mm	Nickel
IO-XLR5-F-BK-JL	JL Series	5	Female	Front	Silver	Solder Contacts	< 2 pF	1.25mm	Black
IO-XLR5-M-BK-JL	JL Series	5	Male	Front	Silver	Solder Contacts	< 2 pF	1.25mm	Black
IO-XLR3-F-JLX	JLX Series	3	Female	Front	Silver	Solder Contacts	≤ 2.5 pF	2.5mm	Nickel
IO-XLR3-M-JLX	JLX Series	3	Male	Front	Silver	Solder Contacts	≤ 2.5 pF	2.0mm	Nickel
IO-XLR5-F-JLX	JLX Series	5	Female	Front	Silver	Solder Contacts	≤ 2.6 pF	1.0mm	Nickel
IO-XLR5-M-JLX	JLX Series	5	Male	Front	Silver	Solder Contacts	≤ 2.6 pF	1.0mm	Nickel



LATCH CABLE CONNECTORS

Part Number	Type	Number of Contacts	Gender	Cable O.D (Min - Max)	Termination Type	Contact Plating	Voltage Rating	Body Color	UL Listed
IO-EC-L	Etherlatch	N/A	N/A	6.0mm - 8.3mm	N/A	N/A	N/A	Black & Nickel	NO
IO-EC-X	Etherlatch	N/A	N/A	6.6mm - 9.2mm	N/A	N/A	N/A	Black , Gray, & Nickel	NO
IO-PRC3FA	Powerlatch	3	Female	5.0mm - 15.0mm	Screw Terminal	Silver	20A, 250V AC	Blue	YES
IO-PRC3FB	Powerlatch	3	Female	5.0mm - 15.0mm	Screw Terminal	Silver	20A, 250V AC	Gray	YES
IO-SL4FC	Speakerlatch	4	Female	3.0mm - 10.0mm	Screw Terminal	Silver	20A, 250V AC	Black, UV Resistant	YES



LATCH CHASSIS CONNECTORS

Part Number	Type	Number of Contacts	Gender	Mounting Direction	Termination Type	Contact Plating	Voltage Rating	Body Color	UL Listed
IO-PRC3MPA	Powerlatch	3	Male	Front	Flat Tab Terminal	Silver	20A, 250V AC	Blue	YES
IO-PRC3MPB	Powerlatch	3	Male	Front	Flat Tab Terminal	Silver	20A, 250V AC	Gray	YES
IO-SL4MP	Speakerlatch	4	Male	Front	Flat Tab Terminal	Silver	20A, 250V AC	Black, UV Resistant	YES
IO-EL8-F-BH	Etherlatch	8	Male	Rear	Horizontal PCB Mount	Gold	50V	Black, Nickel Faceplate	NO
IO-EL8-F-BV	Etherlatch	8	Male	Rear	Horizontal PCB Mount	Gold	50V	Black, Nickel Faceplate	NO
IO-EL8-F-BK-JL-P	Etherlatch	8	Male	Front	Passthrough RJ45	Gold	50V	Black	NO
IO-EL8-F-BK-JL-PR	Etherlatch	8	Male	Front	Right Angle Passthrough RJ45	Gold	50V	Black	NO
IO-EL8-F-JL-P	Etherlatch	8	Male	Front	Passthrough RJ45	Gold	50V	Nickel	NO
IO-EL8-F-JL-PR	Etherlatch	8	Male	Front	Right Angle Passthrough RJ45	Gold	50V	Nickel	NO



IO-C20SP-63



IO-C14



IO-C14SP-28



IO-C14PP-48



IO-C14SP-63

IEC PANEL MOUNTS

Part Number	Voltage Rating	Insulation Resistance	Dielectric Strength	Body Material	Body Finish	Mounting	UL Listed
IO-C6SP-28	2.5A/250V	>100M Ω at 500V	2000V AC	UL94-V-0	Black	Screw On	Yes
IO-C14SP-28	15A/250V	>100M Ω at 500V	2000V AC	UL94-V-0	Black	Screw On	Yes
IO-C14SP-63	15A/250V	>100M Ω at 500V	2000V AC	UL94-V-0	Black	Screw On	Yes
IO-C14PP-48	15A/250V	>100M Ω at 500V	2000V AC	UL94-V-0	Black	Push On	Yes
IO-C20SP-63	20A/250V	>100M Ω at 500V	2000V AC	UL94-V-0	Black	Screw On	Yes

IEC CABLE MOUNTS

Part Number	Voltage Rating	Insulation Resistance	Dielectric Strength	Body Material	Body Finish	Mounting	Max Cable O.D	UL Listed
IO-C14	2.5A/250V	>100M Ω at 500V	2000V AC	UL94-V-0	Black	Screw On	8.0mm	Yes



IO-TXMCH-R

IO-TXMCH



IO-MXMBL

IO-TXMBK



IO-TS4HF



IO-TS4HH



IO-TJ6HF

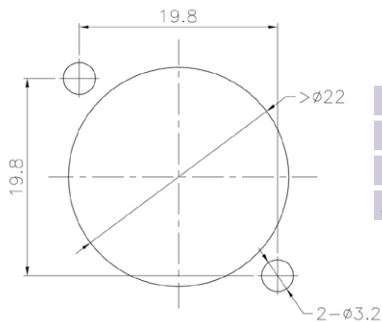
1/4" PHONE PLUGS

Part Number	Number of Poles	Gender	Connector Type	Plug Plating	Wiring	Capacitance Between Contacts	Wiresize (Max O.D.)	Cable O.D (Min - Max)	Shell Plating
IO-T 2MBK	2	Male	Straight	Gold	Solder Contacts	< 7.6 pF	2.25mm	4.0mm - 7.0mm	Black
IO-T3MBK	3	Male	Straight	Gold	Solder Contacts	< 7.6 pF	2.25mm	4.0mm - 7.0mm	Black
IO-T2MCH	2	Male	Straight	Gold	Solder Contacts	< 7.6 pF	1.45mm	4.0mm - 6.4mm	Nickel Tin
IO-T3MCH	3	Male	Straight	Gold	Solder Contacts	< 7.6 pF	1.35mm	4.0mm - 6.4mm	Nickel Tin
IO-T2MCH-R	2	Male	Right-Angle	Gold	Solder Contacts	< 7.6 pF	2.25mm	4.0mm - 6.4mm	Nickel Tin
IO-T3MCH-R	3	Male	Right-Angle	Gold	Solder Contacts	< 8.2 pF	1.2mm	5.0mm - 7.5mm	Nickel Tin
IO-M2MBL	2	Male	Straight	Gold	Solder Contacts	< 7.6 pF	2.0mm	4.0mm - 6.4mm	Nickel
IO-M3MBL	3	Male	Straight	Gold	Solder Contacts	< 7.6 pF	2.0mm	4.0mm - 6.4mm	Nickel

1/4" PHONE JACKS

Part Number	Number of Contacts	Gender	Mounting Direction	Contact Plating	Wiring	Hardware	Switched	Nose Thread	Lengths Available
IO-TJ4HH	4	Female	Rear	Silver	Horizontal PCB	Included	Yes	Half	Black
IO-TJ4HF	4	Female	Rear	Silver	Horizontal PCB	Included	Yes	Full	Black
IO-TJ6HH	6	Female	Rear	Silver	Horizontal PCB	Included	Yes	Half	Black
IO-TJ6HF	6	Female	Rear	Silver	Horizontal PCB	Included	Yes	Full	Black

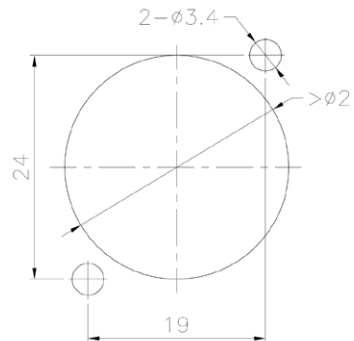
XLR Panel Cutouts



E/B SERIES

PANEL CUTOUT CROSSES

Io Audio	E/B Series
Neutrik	A/AA/B Series
Switchcraft	N/A
Amphenol	AC Series

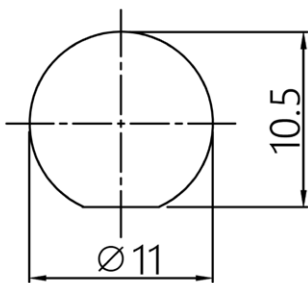


JL/JLX SERIES (REAR SIDE)

PANEL CUTOUT CROSSES

Io Audio	J/JL/JLX Series
Neutrik	D/DL/DLX Series
Switchcraft	E/EH/PD Series
Amphenol	AX/AC "Z" Series

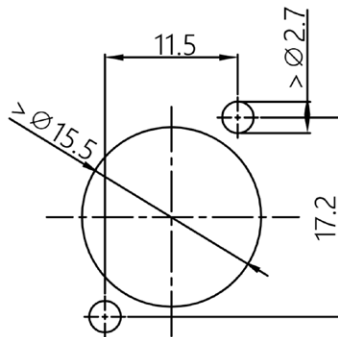
Mini XLR Panel Cutouts



M SERIES

PANEL CUTOUT CROSSES

Io Audio	M Series
Neutrik	N/A
Switchcraft	Tini Q-G "D" Mounting
Amphenol	G TYPE

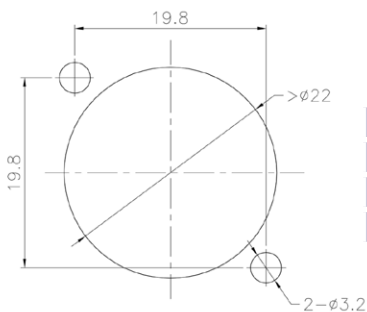


M-JLX SERIES

PANEL CUTOUT CROSSES

Io Audio	M-JLX Series
Neutrik	N/A
Switchcraft	Tini QG Series
Amphenol	G TYPE

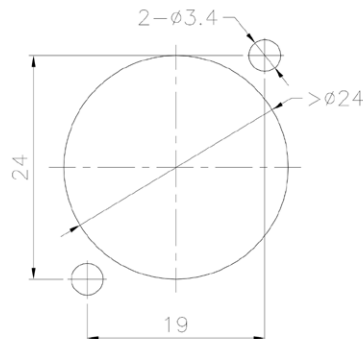
Speakerlatch, Powerlatch, & Etherlatch Panel Cutouts



B SERIES ETHERLATCH

PANEL CUTOUT CROSSES

Io Audio	B Series
Neutrik	A/AA/B Series
Switchcraft	N/A
Amphenol	AC Series

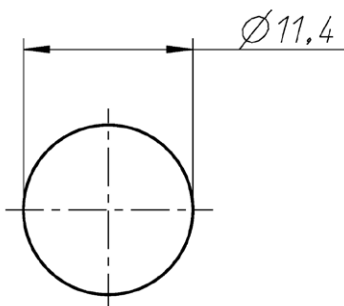


J SERIES, POWERLATCH, SPEAKERLATCH, & ETHERLATCH

PANEL CUTOUT CROSSES

Io Audio	J Series
Neutrik	D/DL Series
Switchcraft	E/EH/PD Series
Amphenol	AX/AC "Z" Series

1/4" Jack Panel Cutouts



TJ/KJ SERIES

PANEL CUTOUT CROSSES

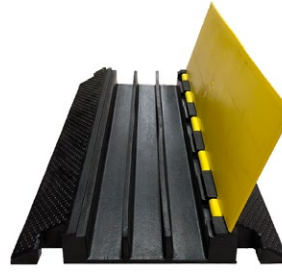
Io Audio	TJ/KJ Series
Neutrik	M/Slim Series
Switchcraft	N/A
Amphenol	ACJS Series



Hercules™ Series
5 Channels



Kore™ Series
2 Channels



Kore™ Series
3 Channels



Kore™ Series
5 Channels

CABLE PROTECTORS

Part Number	Series	Connection Type	Number of Channels	Weight	Channel Size	Length	Width	Height	Working Load Limit
IO-CP5-HY	Hercules™	Wishbone	5	32 lbs	1.33 - 1.65 in	39.82 in	19.84 in	1.97 in	20 Tons
CSL20102-03	Kore™	T	2	14.3 lbs	1.57 in	39.37 in	9.84 in	1.97 in	8 Tons
CSL20103-03	Kore™	T	3	14.3 lbs	1.57 in	35.83 in	19.69 in	1.97 in	8 Tons
CSL20105-03	Kore™	T	5	30 lbs	1.57 in	35.43 in	19.68 in	1.97 in	8 Tons



IO-TJ-N



IO-TS58



IO-M3X10/M3HN-B-50



IO-TJ-W

IO-M3X10/M3HN-50

SCREWS

Part Number	Thread	Length	Head	Material	Finish	Pieces Per Pack	Screw Type
IO-M3X8STP-50	M3	8mm	Panhead Phillips	Steel	Black	50	Self Tapping Plastic Screw
IO-M3X8STP-100	M3	8mm	Panhead Phillips	Steel	Black	100	Self Tapping Plastic Screw
IO-M3X10/M3HN-50	M3	10mm	Flathead Phillips	Steel	Nickel	50 Screws, 50 Nuts	Machine Screw
IO-M3X10/M3HN-100	M3	10mm	Flathead Phillips	Steel	Nickel	100 Screws, 100 Nuts	Machine Screw
IO-M3X10/M3HN-B-50	M3	10mm	Flathead Phillips	Steel	Black	50 Screws, 50 Nuts	Machine Screw
IO-M3X10/M3HN-B-100	M3	10mm	Flathead Phillips	Steel	Black	100 Screws, 100 Nuts	Machine Screw

HARDWARE

Part Number	Type	Thread	Finish	Material	Pieces Per Pack
IO-TS58	Thread saver	5/8"	Nickel	Stainless Steel	1
IO-TJ-W	TJ Series Washer	N/A	Black	PA66+UL94V-0	50
IO-TJ-N	TJ Series Nut	7/16"	Black	PA66+UL94V-0	50





CREATE A POWER CORD

Use the chart below to create a part number for the power cord of your choice.

Number of Conductors	Conductor Size	Cord Type	End 1	End 2	Length	Color Code
2	4	1	3	1	67	01
1 = 2 Conductors 2 = 3 Conductors 3 = 3 Conductors (Shielded)	2 = 12 AWG 4 = 14 AWG 6 = 16 AWG 8 = 18 AWG A = .75mm B = 1.0mm C = 1.5mm	1 = SJT 2 = SVT 3 = SPT-1 4 = SJO 5 = SJTW 6 = H03VV-F 7 = H03VVH2-F 8 = H05VV-F	0 = Blunt-Cut Wires 1 = 1-15P Standard 2 = 1-15P Polarized 3 = 5-15P Straight 4 = 5-15P Right Angle 5 = 5-15P Hospital Grade Clear 6 = 5-15P Hospital Grade Gray 7 = C14 8 = 6-15P 9 = 5-20P A = C14 with European Approval B = Type C with European Approval C = Right Angle Type E with European Approval D = Type E 3 Pin with European Approval E = Type G F = Type I with Australian Approval G = Type F 2 Pin with European Approval	0 = Blunt-Cut Wires 1 = C13 Straight 2 = C13 Right Angle 3 = C14 4 = C-15 5 = C-19 6 = C-17 7 = 5-15R 8 = C-13	10 = 1' 18 = 1'8" 25 = 2.5M 33 = 3'3" 50 = 5'0" 60 = 6'0" 67 = 6'7" 76 = 7'6" 80 = 8'0" 90 = 9'0" 910 = 9'10" 100 = 10'0" 140 = 14'0" 160 = 16'0" 250 = 25'0"	01 = Black 02 = Brown 03 = Gray 05 = White

Popular End Types

Bare Ends	1-15P	5-15P	5-15P Hospital Grade	6-15P	C13	C14	C-13 Hospital Grade
			 				 

C-13 Right Angle	Type C	Type E/F	Type G
			



IO AUDIO TECHNOLOGIES manufactures wire, cable, and interconnect products for a wide range of industries and applications. No matter your need, our support network of industry experts will help determine the best product for your application.

With over 40 years of manufacturing experience, Io Audio Technologies is dedicated to providing our customers with the best quality products.

FOUNDED ON SOUND

Our team has extensive backgrounds in the studio and live sound industry so we understand the needs of our customers and have brought our combined production and engineering experience to the manufacturing world by creating amazing products that we know will our customers will love.

VALUE-ADD

We also offer value-add capabilities which allows us to create custom products that meet your needs, including:

- Adding Leads to Connectors
- Adding Heatshrink
- Adding Labels
- Custom Cable Lengths



**Io Audio
Technologies**

10557 Metric Dr
Dallas, TX 75243

214.340.0265
ioaudiotech.com