


DIMENSIONS ARE IN MILLIMETERS

UNLESS OTHERWISE SPECIFIED TOLERANCES

- ANGLES = $\pm 5^\circ$
- UP TO 6 = ± 0.2
- 6-40 = ± 0.4
- 40-120 = ± 0.6
- 120-315 = ± 1
- ABOVE 315 = ± 1.6

THIRD_ANGLE  SCALE 1.5/1

Io Audio Technologies

TITLE

E Series 5P Male XLR Chassis Connector

PART NO.

IO-XLR5-M-EH

REV.

A1

NO.	DESCRIPTION	MATERIAL	FINISH	Q'TY
6	PIN 3	H59-1	GOLD	1
5	GROUND	H62	NICKEL	1
4	PIN 2 & 4	H59-1	GOLD	2
3	PIN 1 & 5	H59-1	GOLD	2
2	SHELL BODY	PA	BLACK	1
1	LATCH	COLD-ROLLED	NICKEL	1

A

A

F

F

E

E

D

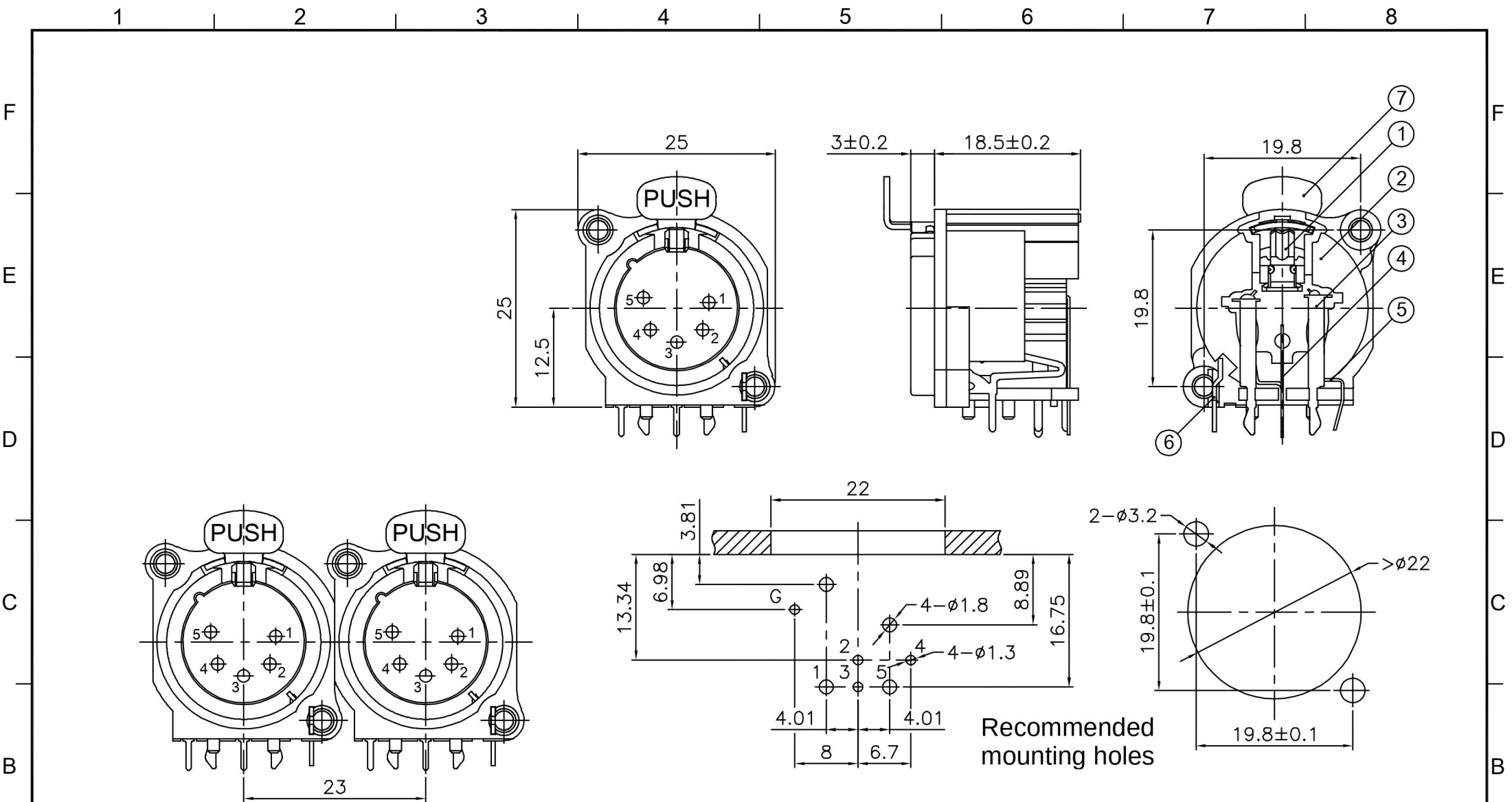
D

C

C

B

B



7	PUSH BUTTON	H62	NICKEL	1
6	GROUND TERMINAL	H62	NICKEL	1
5	TERMINAL 2 & 4	H62	GOLD	2
4	TERMINAL 3	H62	GOLD	1
3	TERMINAL 1 & 5	H62	GOLD	2
2	SHELL BODY	PA	BLACK	1
1	LATCH	65Mn	NICKEL	1
NO.	DESCRIPTION	MATERIAL	FINISH	Q'TY

DIMENSIONS ARE IN MILLIMETERS	
UNLESS OTHERWISE SPECIFIED TOLERANCES	
ANGLES = ±5°	
UP TO 6 = ±0.2	
6-40 = ±0.4	
40-120 = ±0.6	
120-315 = ±1	
ABOVE 315 = ±1.6	
THIRD_ANGLE	
SCALE	1.5/1

<h1>Io Audio Technologies</h1>	
TITLE E Series 5P Female XLR Chassis Connector	
PART NO.	IO-XLR5-F-EH
REV.	A1

A

A

F

F

E

E

D

D

C

C

B

B

1 2 3 4 5 6 7 8

1 2 3 4 5 6 7 8