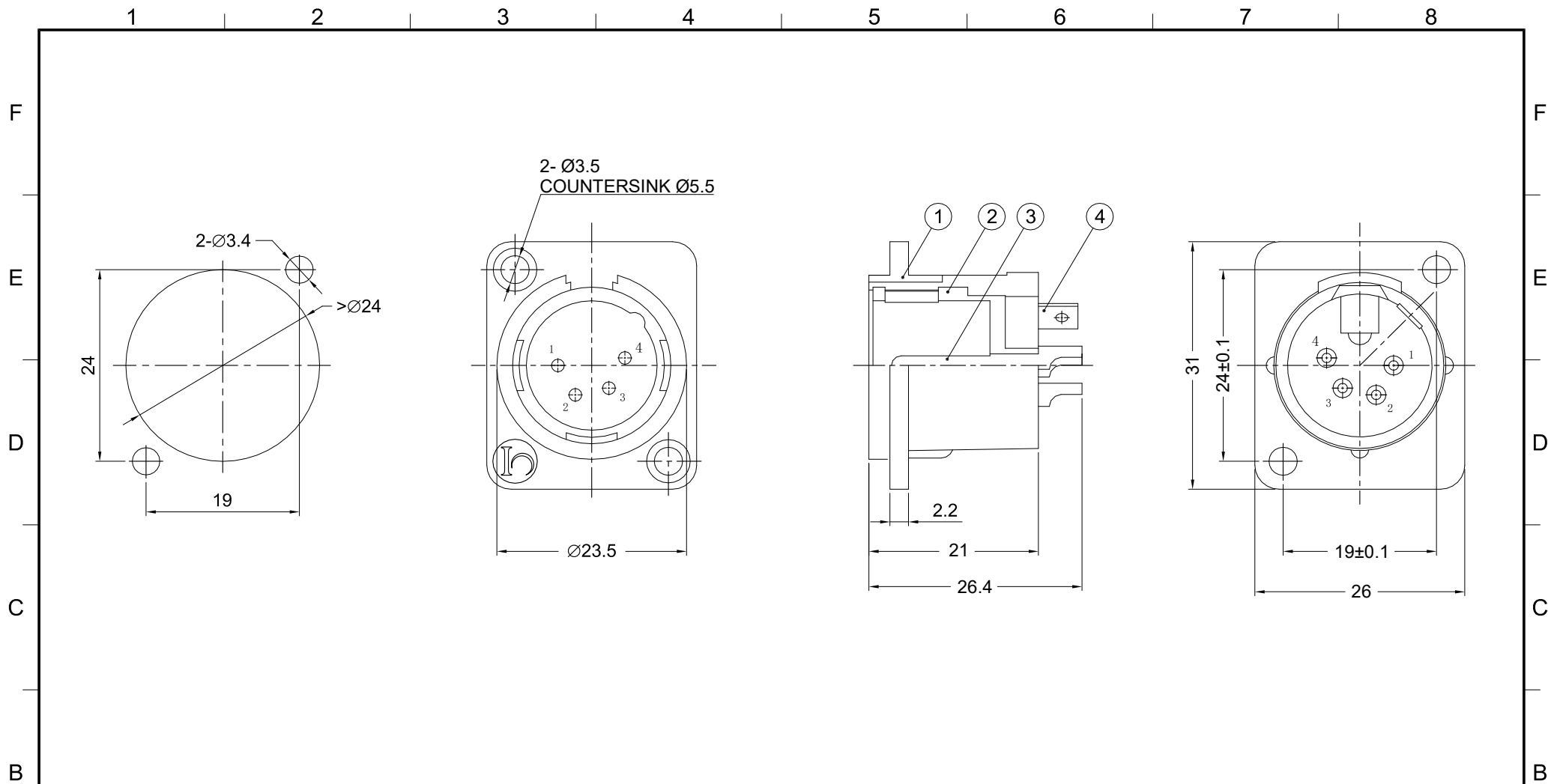


6	Ground Terminal	H62	Tin	1
5	Signal Pins	BRASS	Silver	4
4	Insulator	PA (94 V-0)	Black	1
3	Latch Catch	65Mn	Nickel	1
2	Latch Release	H62	Nickel	1
1	Body Shell	ZnAl4-1	Nickel	1
NO.	DESCRIPTION	MATERIAL	FINISH	Q'TY

DIMENSIONS ARE IN MILLIMETERS		APPROVED	DATE
UNLESS OTHERWISE SPECIFIED TOLERANCES		CHECKED	DATE
ANGLES = ±5°		DRAWN	DATE
UP TO 6 = ±0.2			
6-40 = ±0.4			
40-120 = ±0.6			
120-315 = ±1			
ABOVE 315 = ±1.6			
THIRD_ANGLE			
SCALE	1/1		

<b>Io Audio Technologies</b>			
DESCRIPTION			
JL Series 4 Pin XLR Female Chassis Connector, Nickel Finish			
PART NO.	IO-XLR4-F-JL	REV.	A1



NO.	DESCRIPTION	MATERIAL	FINISH	Q'TY
4	Ground Terminal	H62	Tin	1
3	Signal Pins	H59-1	Silver	4
2	Insulator	PA (94 V-0)	Black	1
1	Body Shell	ZnAl4-1	Nickel	1

DIMENSIONS ARE IN MILLIMETERS	
UNLESS OTHERWISE SPECIFIED TOLERANCES	
ANGLES = ±5'	
UP TO 6 = ±0.2	
6-40 = ±0.4	
40-120 = ±0.6	
120-315 = ±1	
ABOVE 315 = ±1.6	
THIRD_ANGLE	
SCALE	1/1

APPROVED	DATE
CHECKED	DATE
DRAWN	DATE
FILE NO.	
ERP LINK:	

<b>Io Audio Technologies</b>	
DESCRIPTION JL Series 4 Pin XLR Male Chassis Connector, Nickel Finish	
PART NO.	<b>IO-XLR4-M-JL</b>
REV.	<b>A1</b>

1 2 3 4 5 6 7 8