

7	Ground Terminal	H62	Nickel		
6	Latch Release	H62	Nickel		
5	Pin 2	H62	Gold		
4	Pin 3	H62	Gold		
3	Pin 1	H62	Gold		
2	Shell Body	PA (UL94 V-0)	Black		
1	Latch Catch	65Mn	Nickel		
NO.	DESCRIPTION	MATERIAL	FINISH	Q'TY	

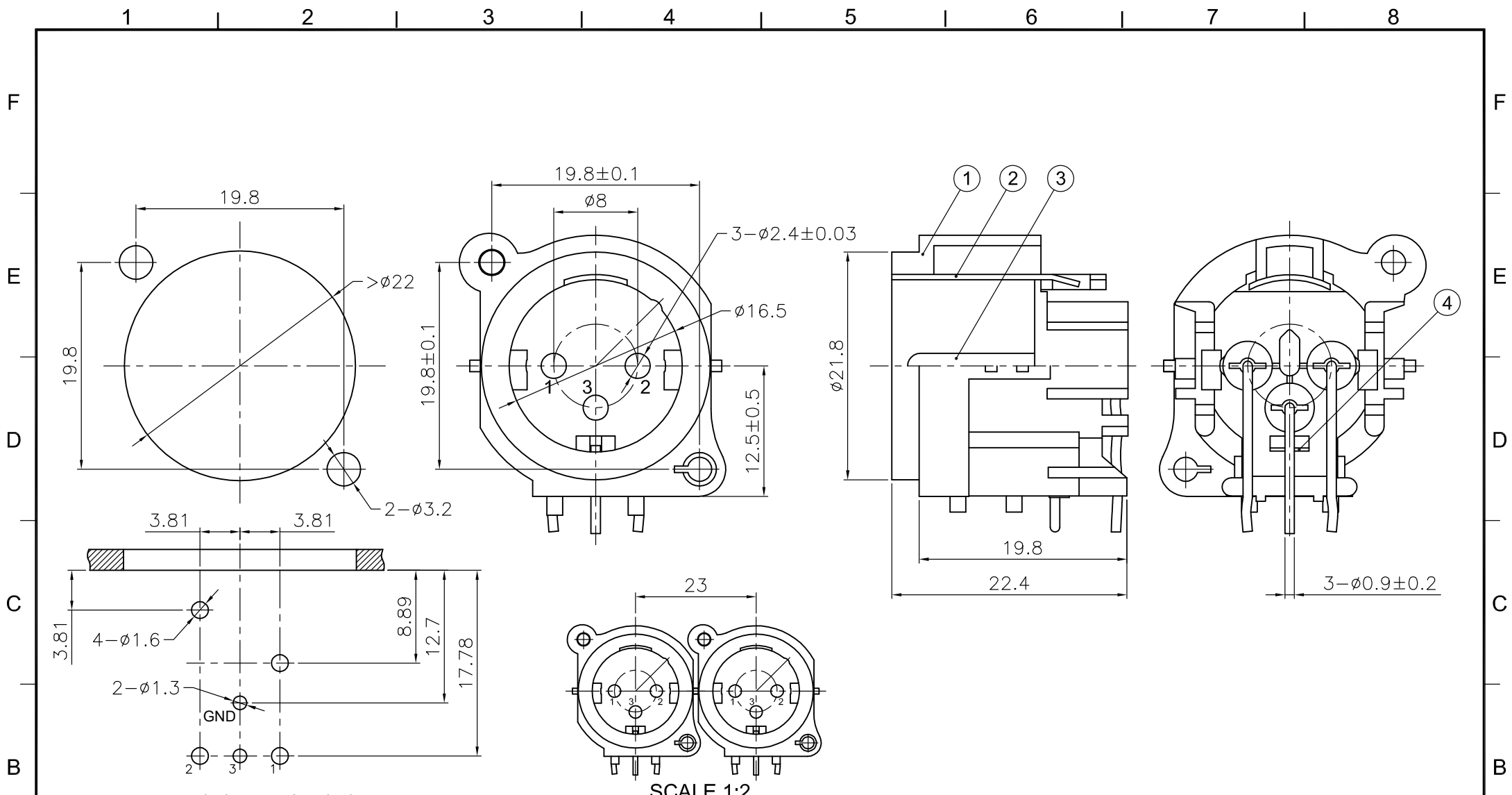
DIMENSIONS ARE IN MILLIMETERS	
UNLESS OTHERWISE SPECIFIED TOLERANCES	
ANGLES = ±5°	
UP TO 6 = ±0.2	
6-40 = ±0.4	
40-120 = ±0.6	
120-315 = ±1	
ABOVE 315 = ±1.6	
THIRD_ANGLE	
SCALE	1.5/1

APPROVED	DATE
CHECKED	DATE
DRAWN	DATE

<h1>Io Audio Technologies</h1>		
Description		
EH Series 3 Pin Female Chassis Mount XLR Connector, Horizontal PCB		
PART NO.	IO-XLR3-F-EH	REV. A2

A

A



Recommended mounting hole pattern

SCALE 1:2

NO.	DESCRIPTION	MATERIAL	FINISH	Q'TY
4	Ground Pin	H62	Nickel	1
3	Pins	H59-1	Gold	3
2	Latch Catch	65Mn	Nickel	1
1	Shell Body	PA	Black	1

DIMENSIONS ARE IN MILLIMETERS		APPROVED	DATE
UNLESS OTHERWISE SPECIFIED TOLERANCES		CHECKED	DATE
ANGLES = $\pm 5^\circ$		DRAWN	DATE
UP TO 6 = ± 0.2			
6-40 = ± 0.4			
40-120 = ± 0.6			
120-315 = ± 1			
ABOVE 315 = ± 1.6			
THIRD_ANGLE			
SCALE	2/1		

<h1>Io Audio Technologies</h1>		
Description		
EH Series 3 Pin Male Chassis Mount XLR Connector, Horizontal PCB		
PART NO.	IO-XLR3-M-EH	REV. A2