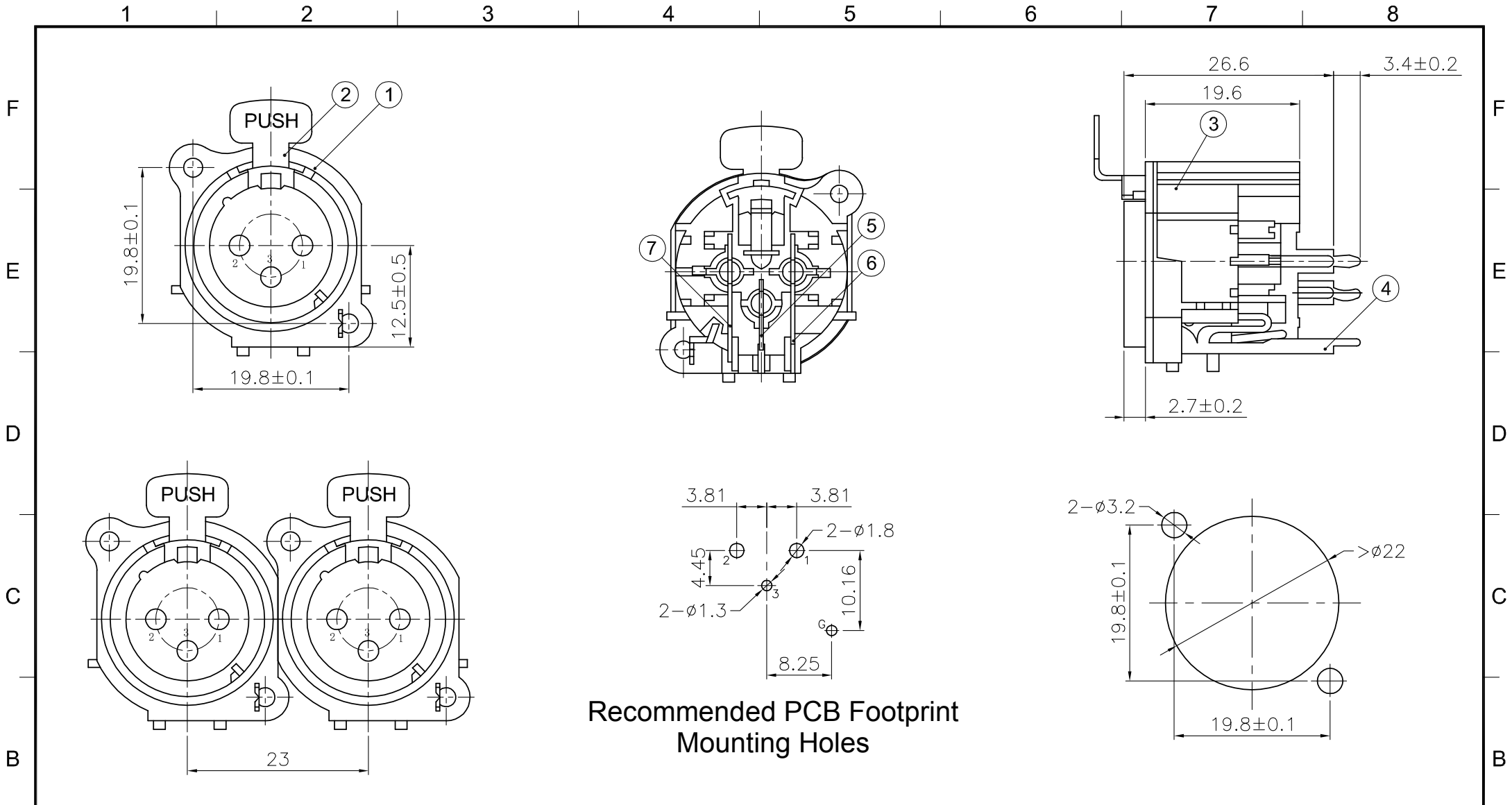


Recommended PCB Footprint
Mounting Holes

5	Ground Terminal	H62	Nickel	1	
4	Pins	H59-1	Gold	3	
3	Latch Catch	65Mn	Nickel	1	
2	Body Shell	PA	Black	1	
1	Faceplate	ZnAL4-0	Nickel	1	
NO.	DESCRIPTION	MATERIAL	FINISH	Q'TY	DRAWING NO.

DIMENSIONS ARE IN MILLIMETERS		APPROVED	DATE
UNLESS OTHERWISE SPECIFIED TOLERANCES		CHECKED	DATE
ANGLES = ±5°		DRAWN	DATE
UP TO 6 = ±0.2			
6-40 = ±0.4			
40-120 = ±0.6			
120-315 = ±1			
ABOVE 315 = ±1.6			
THIRD_ANGLE			
SCALE	1.5/1		

<h1>Io Audio Technologies</h1>			
DESCRIPTION			
B Series 3 Pin XLR Male Chassis Connector, Vertical PCB			
PART NO.		REV.	A3
<h2>IO-XLR3-M-BV</h2>			



Recommended PCB Footprint Mounting Holes

7	Pin 1	H62	Gold	1	
6	Pin 2	H62	Gold	1	
5	Pin 3	H62	Gold	1	
4	Ground Terminal	H62	Nickel	1	
3	Body Shell	PA	Black	1	
2	Latch Release	H62	Nickel	1	
1	Faceplate	ZnAl4-0	Nickel	1	
NO.	DESCRIPTION	MATERIAL	FINISH	Q'TY	DRAWING NO.

DIMENSIONS ARE IN MILLIMETERS		APPROVED	DATE
UNLESS OTHERWISE SPECIFIED TOLERANCES		CHECKED	DATE
ANGLES = ±5°		DRAWN	DATE
UP TO 6 = ±0.2			
6-40 = ±0.4			
40-120 = ±0.6			
120-315 = ±1			
ABOVE 315 = ±1.6			
THIRD_ANGLE			
SCALE	1.5/1		

<h1>Io Audio Technologies</h1>			
DESCRIPTION B Series 3 Pin XLR Female Chassis Connector, Vertical PCB			
PART NO.	IO-XLR3-F-BV	REV.	A2