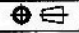


8	BOOT	PVC	BLACK	1
7	T-RING	POM	WHITE	1
6	CAP	PA	BLACK	1
5	CHUCK	POM	WHITE	1
4	TERMINAL	H62	TIN	1
3	INSULATOR	PA	BLACK	1
2	PIN	H59-1	GOLD	3
1	DIE-CAST SHELL	ZZnAL4-0	ELECTRO-COATING BLACK	1
NO.	DESCRIPTION	MATERIAL	FINISH	Q'TY

DIMENSIONS ARE IN MILLIMETERS
 UNLESS OTHERWISE SPECIFIED TOLERANCES
 ANGLES = ±5°
 UP TO 6 = ±0.2
 6-40 = ±0.4
 40-120 = ±0.6
 120-315 = ±1
 ABOVE 315 = ±1.6

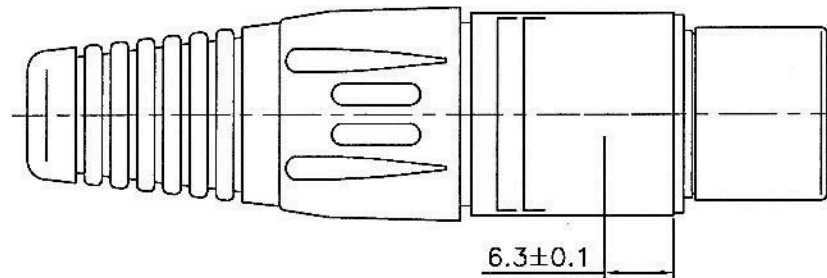
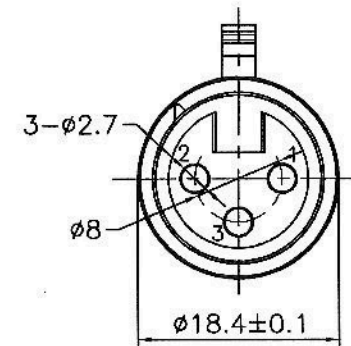
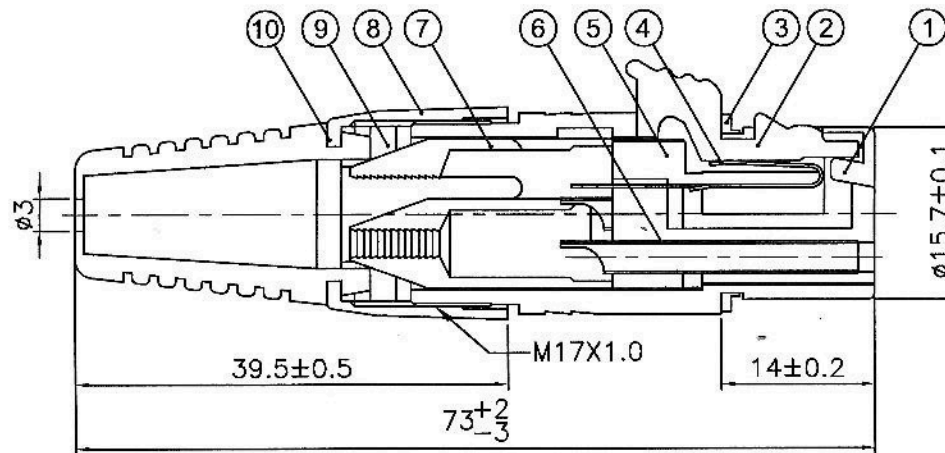
THIRD_ANGLE 

SCALE 1.5/1

IO AUDIO TECHNOLOGIES

TITLE **3P Male XLR Connector, Black Housing, Gold Plated**

PART NO. **IO-XLR3-M-BKAU** REV. **A1**



10	BOOT	PVC	BLACK	1
9	T-RING	POM		1
8	CAP	PA	BLACK	1
7	CHUCK	POM	WHITE	1
6	FEMALE PIN	PHOSPHOR BRONZE	GOLD	3
5	INSULATOR	PA	BLACK	1
4	LATCH	STAINLESS STEEL	TIN	1
3	SEAL	RUBBER	BLACK	1
2	PUSH BUTTON	ZZnAL4-1	NICKEL	1
1	DIE-CAST SHELL	ZZnAL4-0	ELECTRO-COATING BLACK	1
NO.	DESCRIPTION	MATERIAL	FINISH	QTY

DIMENSIONS ARE IN MILLIMETERS
 UNLESS OTHERWISE SPECIFIED
 TOLERANCES
 ANGLES = ±5°
 UP TO 6 = ±0.2
 6-40 = ±0.4
 40-120 = ±0.6
 120-315 = ±1
 ABOVE 315 = ±1.6

THIRD_ANGLE SCALE 1.5/1

AUDIO TECHNOLOGIES

3P Female XLR Connector

PART NO. **IO-XLR3-F-BKAU** REV. A1