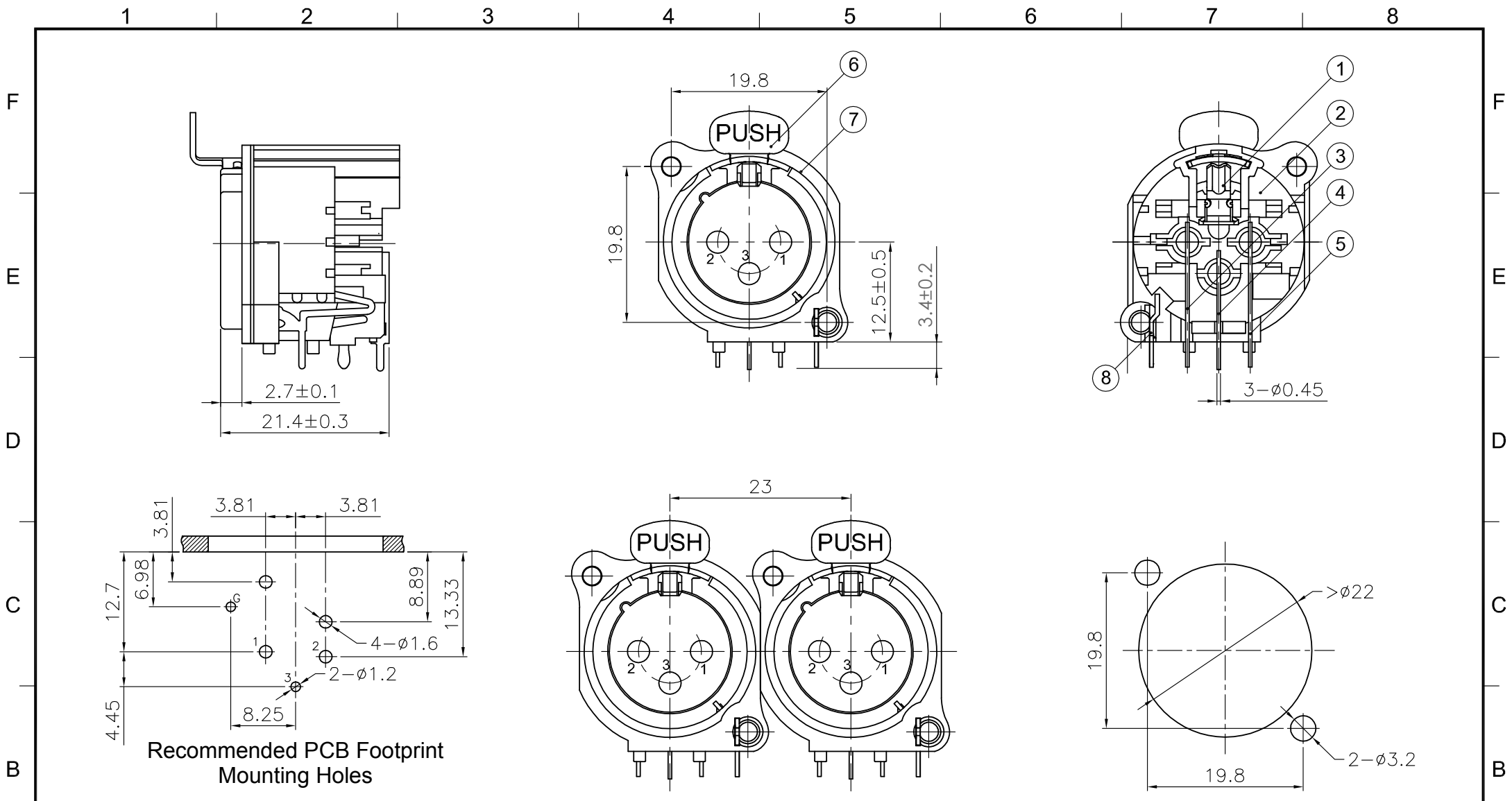


Recommended PCB Footprint Mounting Holes

5	Ground Terminal	H62	Nickel	1	DRAWING NO.
4	Pins	H59-1	Gold	3	
3	Latch Catch	65Mn	Nickel	1	
2	Body Shell	PA	Black	1	
1	Faceplate	ZnAl4-0	Nickel	1	
NO.	DESCRIPTION	MATERIAL	FINISH	Q'TY	DRAWING NO.

DIMENSIONS ARE IN MILLIMETERS		APPROVED	DATE
UNLESS OTHERWISE SPECIFIED TOLERANCES		CHECKED	DATE
ANGLES = ±5°		DRAWN	DATE
UP TO 6 = ±0.2			
6-40 = ±0.4			
40-120 = ±0.6			
120-315 = ±1			
ABOVE 315 = ±1.6			
THIRD_ANGLE			
SCALE	1.5/1		

<h1>Io Audio Technologies</h1>			
DESCRIPTION			
B Series 3 Pin XLR Male Chassis Connector, Horizontal PCB			
PART NO.		REV.	A3
<h2>IO-XLR3-M-BH</h2>			



Recommended PCB Footprint Mounting Holes

8	Ground Terminal	H62	Nickel	1	
7	Faceplate	ZnAl4-0	Nickel	1	
6	Latch Release	H62	Nickel	1	
5	Pin 2	H62	Gold	1	
4	Pin 3	H62	Gold	1	
3	Pin 1	H62	Gold	1	
2	Body Shell	PA	Black	1	
1	Latch Catch	65Mn	Nickel	1	
NO.	DESCRIPTION	MATERIAL	FINISH	Q'TY	DRAWING NO.

DIMENSIONS ARE IN MILLIMETERS		APPROVED	DATE
UNLESS OTHERWISE SPECIFIED TOLERANCES		CHECKED	DATE
ANGLES = ±5° UP TO 6 = ±0.2 6-40 = ±0.4 40-120 = ±0.6 120-315 = ±1 ABOVE 315 = ±1.6		DRAWN	DATE
THIRD_ANGLE			
SCALE	1.5/1		

<b>Io Audio Technologies</b>		
DESCRIPTION		
B Series 3 Pin XLR Female Chassis Connector, Horizontal PCB		
PART NO.	<b>IO-XLR3-F-BH</b>	REV. <b>A2</b>