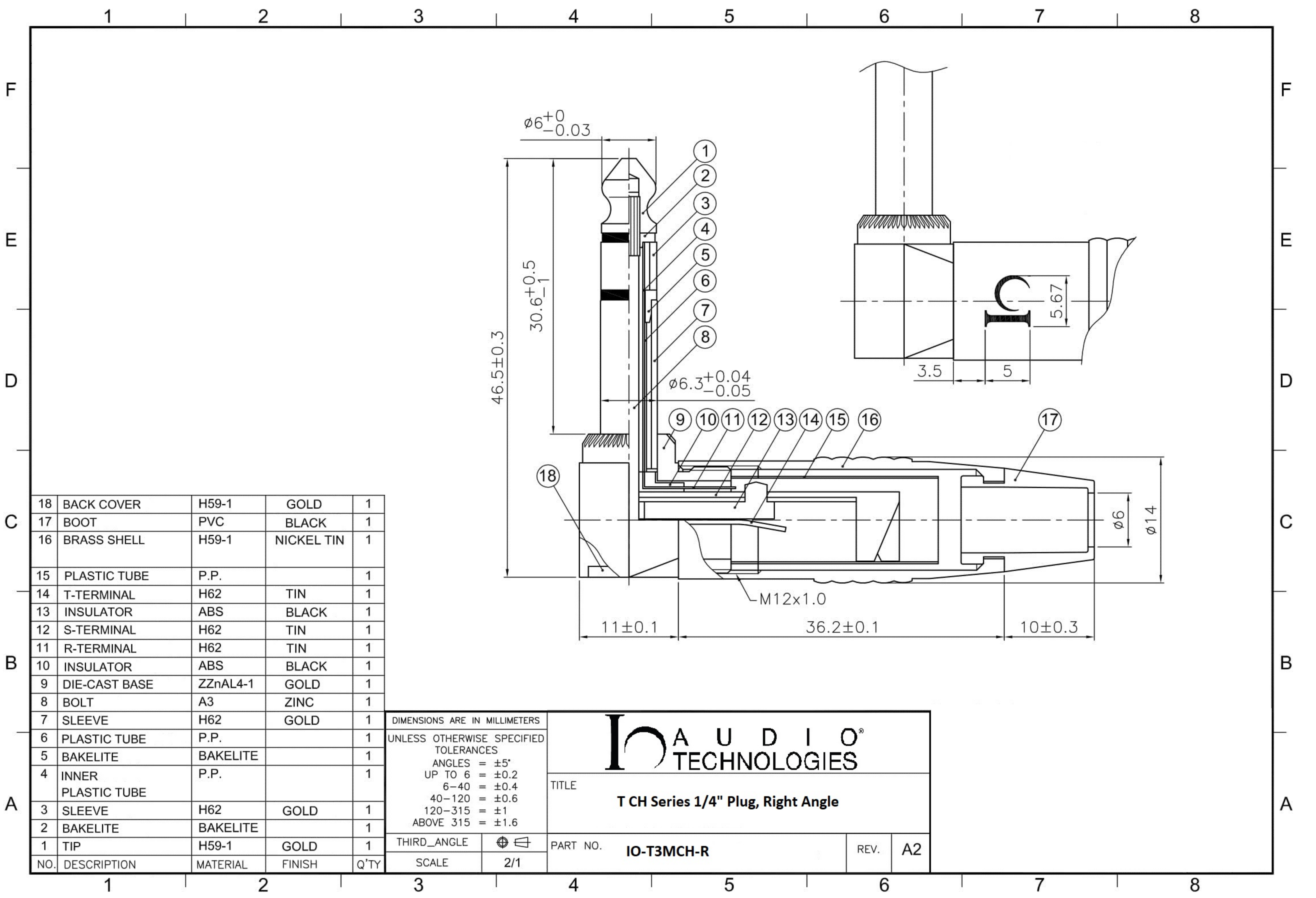


|     |               |          |            |      |
|-----|---------------|----------|------------|------|
| 12  | BACK COVER    | H59-1    | GOLD       | 1    |
| 11  | BOOT          | PVC      | BLACK      | 1    |
| 10  | BRASS SHELL   | H59-1    | NICKEL TIN | 1    |
| 9   | PLASTIC TUBE  | P.P.     |            | 1    |
| 8   | T-TERMINAL    | H62      | TIN        | 1    |
| 7   | INSULATOR     | ABS      | BLACK      | 1    |
| 6   | S-TERMINAL    | H62      | TIN        | 1    |
| 5   | DIE-CAST BASE | ZZnAL4-1 | GOLD       | 1    |
| 4   | BOLT          | A3       | ZINC       | 1    |
| 3   | SLEEVE        | H62      | GOLD       | 1    |
| 2   | BAKELITE      | BAKELITE |            | 1    |
| 1   | TIP           | H59-1    | GOLD       | 1    |
| NO. | DESCRIPTION   | MATERIAL | FINISH     | Q'TY |

|                                       |                  |
|---------------------------------------|------------------|
| DIMENSIONS ARE IN MILLIMETERS         |                  |
| UNLESS OTHERWISE SPECIFIED TOLERANCES |                  |
| ANGLES = $\pm 5^\circ$                |                  |
| UP TO 6 = $\pm 0.2$                   |                  |
| 6-40 = $\pm 0.4$                      |                  |
| 40-120 = $\pm 0.6$                    |                  |
| 120-315 = $\pm 1$                     |                  |
| ABOVE 315 = $\pm 1.6$                 |                  |
| THIRD_ANGLE                           | $\oplus \ominus$ |
| SCALE                                 | 2/1              |

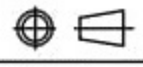
|   |                   |      |           |
|---|-------------------|------|-----------|
| <b>IO AUDIO TECHNOLOGIES</b>                          |                   |      |           |
| TITLE<br><b>T CH Series 1/4" TS Plug, Right Angle</b> |                   |      |           |
| PART NO.  | <b>IO-T2MCH-R</b> | REV. | <b>A2</b> |





|     |                    |          |            |      |
|-----|--------------------|----------|------------|------|
| 18  | BACK COVER         | H59-1    | GOLD       | 1    |
| 17  | BOOT               | PVC      | BLACK      | 1    |
| 16  | BRASS SHELL        | H59-1    | NICKEL TIN | 1    |
| 15  | PLASTIC TUBE       | P.P.     |            | 1    |
| 14  | T-TERMINAL         | H62      | TIN        | 1    |
| 13  | INSULATOR          | ABS      | BLACK      | 1    |
| 12  | S-TERMINAL         | H62      | TIN        | 1    |
| 11  | R-TERMINAL         | H62      | TIN        | 1    |
| 10  | INSULATOR          | ABS      | BLACK      | 1    |
| 9   | DIE-CAST BASE      | ZZnAL4-1 | GOLD       | 1    |
| 8   | BOLT               | A3       | ZINC       | 1    |
| 7   | SLEEVE             | H62      | GOLD       | 1    |
| 6   | PLASTIC TUBE       | P.P.     |            | 1    |
| 5   | BAKELITE           | BAKELITE |            | 1    |
| 4   | INNER PLASTIC TUBE | P.P.     |            | 1    |
| 3   | SLEEVE             | H62      | GOLD       | 1    |
| 2   | BAKELITE           | BAKELITE |            | 1    |
| 1   | TIP                | H59-1    | GOLD       | 1    |
| NO. | DESCRIPTION        | MATERIAL | FINISH     | Q'TY |

DIMENSIONS ARE IN MILLIMETERS  
 UNLESS OTHERWISE SPECIFIED  
 TOLERANCES  
 ANGLES = ±5°  
 UP TO 6 = ±0.2  
 6-40 = ±0.4  
 40-120 = ±0.6  
 120-315 = ±1  
 ABOVE 315 = ±1.6

THIRD\_ANGLE   
 SCALE 2/1

**IO AUDIO®**  
 TECHNOLOGIES

TITLE  
**T CH Series 1/4" Plug, Right Angle**

PART NO. **IO-T3MCH-R** REV. **A2**