

1 2 3 4 5 6 7 8

F

E

D

C

B

A

F

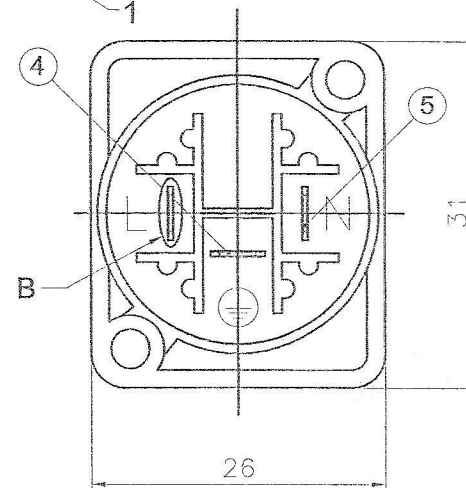
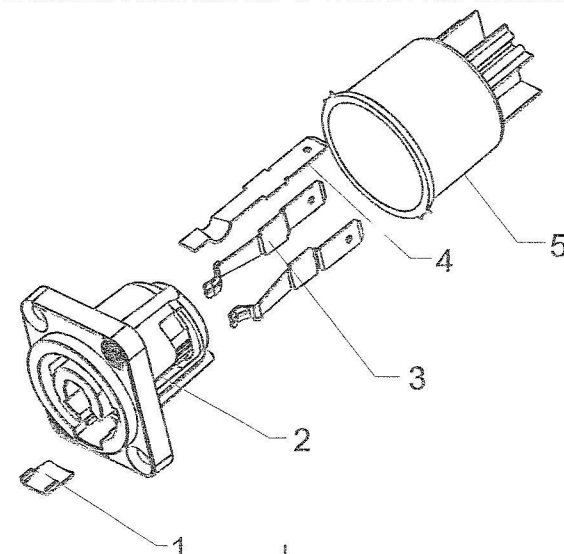
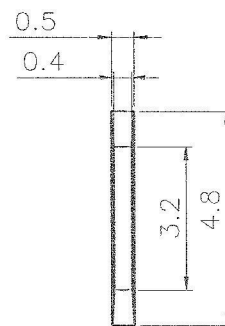
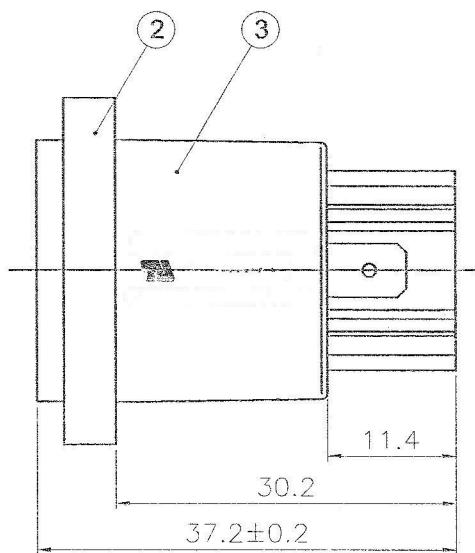
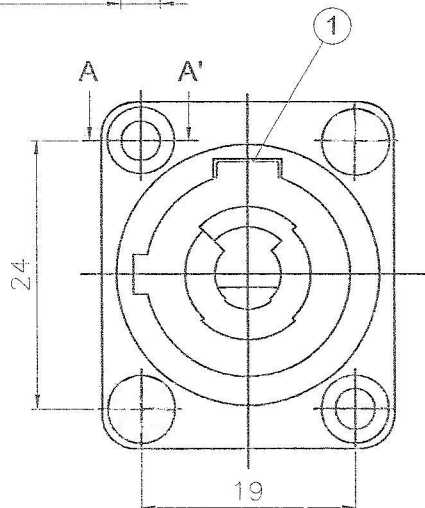
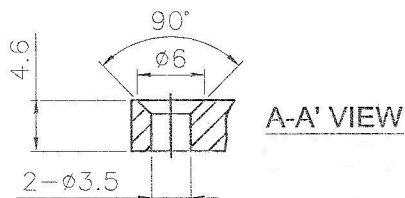
E

D

C

B

A



5	PIN-L/N	PHOSPHOR BRONZE	SILVER	2
4	PIN-GROUND	PHOSPHOR BRONZE	SILVER	1
3	BACK COVER	PA	DARK GRAY	1
2	PLASTIC BASE	PA	BLUE	1
1	SHEET METAL	PHOSPHOR BRONZE	NICKEL	1
NO.	DESCRIPTION	MATERIAL	FINISH	Q'TY

DIMENSIONS ARE IN MILLIMETERS	
UNLESS OTHERWISE SPECIFIED TOLERANCES	
ANGLES = ±5°	
UP TO 6 = ±0.2	
6-40 = ±0.4	
40-120 = ±0.6	
120-315 = ±1	
ABOVE 315 = ±1.6	
THIRD_ANGLE	
SCALE	1.5/1

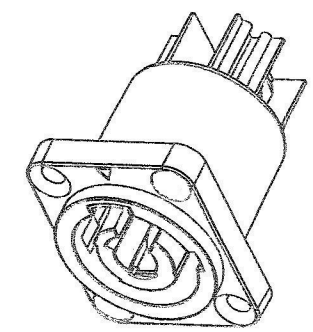
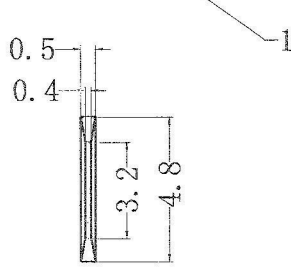
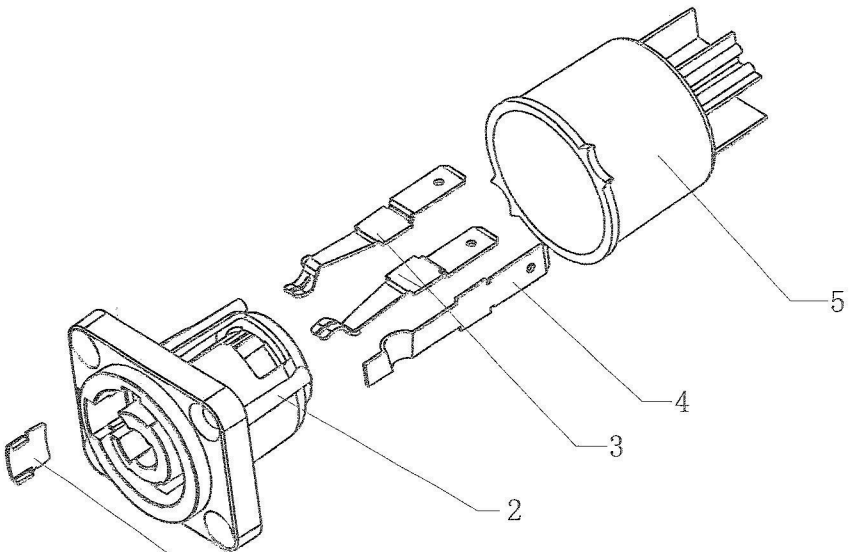
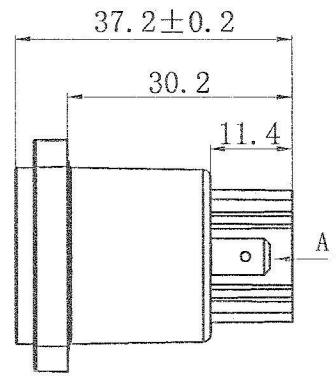
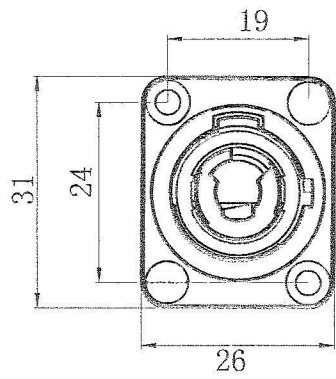
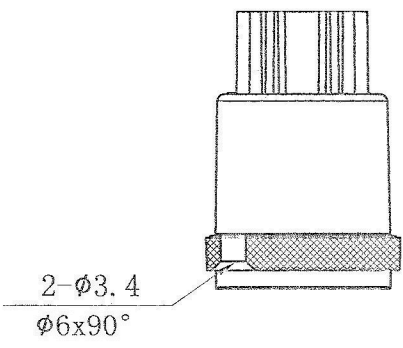
PART NO. IO-PRC3MPA		REV.	A3

1 2 3 4 5 6 7 8

1 2 3 4 5 6 7 8

F
E
D
C
B
A

F
E
D
C
B
A



DIMENSIONS ARE IN MILLIMETERS

UNLESS OTHERWISE SPECIFIED TOLERANCES

ANGLES = ±5°
UP TO 6 = ±0.2
6-40 = ±0.4
40-120 = ±0.6
120-315 = ±1
ABOVE 315 = ±1.6

THIRD_ANGLE

SCALE 1/1

H A U D I O[®]		TECHNOLOGIES	
TITLE			
Powerlatch Chassis Connector, Gray			
PART NO.		REV.	A4
IO-PRC3MPB			

NO.	DESCRIPTION	MATERIAL	FINISH	Q'TY
5	BACK COVER	PA	DARK GRAY	1
4	SVP593-GND	PHOSPHOR BRONZE	SILVER	1
3	SVP593-L/N	PHOSPHOR BRONZE	SILVER	2
2	PLASTIC BASE	PA	ASH GREY	1
1	SHEET METAL	PHOSPHOR BRONZE	NICKEL	1

5 6 7 8