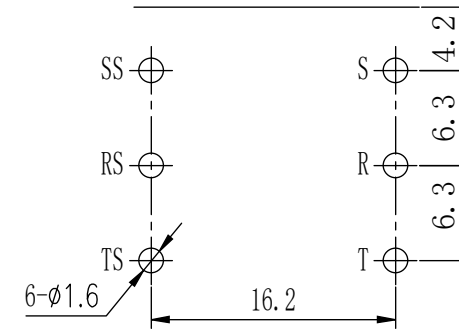
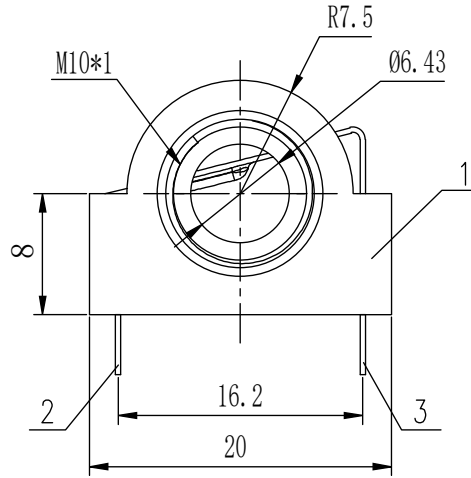
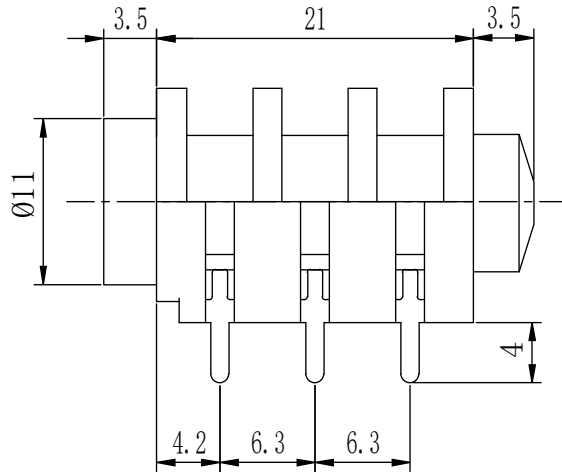


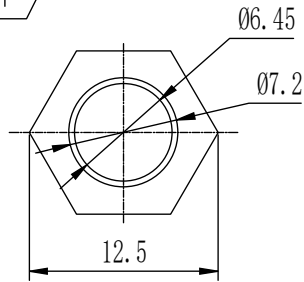
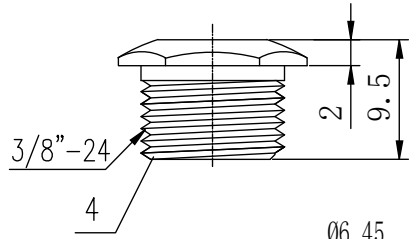
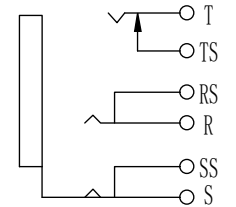
Specifications:

- |                           |                     |
|---------------------------|---------------------|
| 1. Temp Range:            | -25 ~ 70°C          |
| 2. Rel. Humidity:         | 90%(40°C)           |
| 3. Max Voltage:           | 30VDC, 1.0A         |
| 4. Contact Resistance:    | ≤30mΩ               |
| 5. Insulation Resistance: | ≥100MΩ              |
| 6. Dielectric Strength:   | 500VAC (50Hz), 1min |
| 7. Insertion Force:       | 5 ~ 30N             |
| 8. Insertion Cycles:      | ≥5000               |

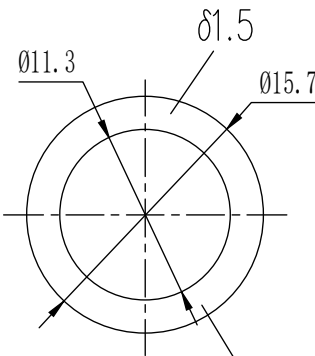


PCB LAYOUT (BOTTOM VIEW)  
Tolerance: ±0.05

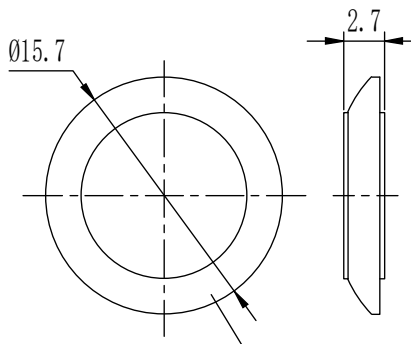
Electrical schematic



Cap Nut



Gasket 1



Gasket 2

6	Gasket Washer	PA+UL94-V0	1	Black
5	Gasket Washer	PA+UL94-V0	1	Black
4	PCB Contact	Brass H59	1	Copper Tin Alloy
3	Moving Contact	Phosphor Bronze QSn6.5-0.1	3	Silver
2	Stationary Contacts	Brass H62	3	Silver
1	Connector Body	PA66+UL94-V0	1	Black
Note	Item	Material	QTY	Finish/Color/Plating

Tolerances  
 Angles: ±5°  
 Dimensions: >30mm, ±0.45  
 10mm~30mm, ±0.35  
 <10mm, ±0.25



**P/N: IO-KJ6HCD2**

6.35mm Stereo Phono Jack,  
 Normalling Type

Units: mm

Page 1 OF 1

A4

