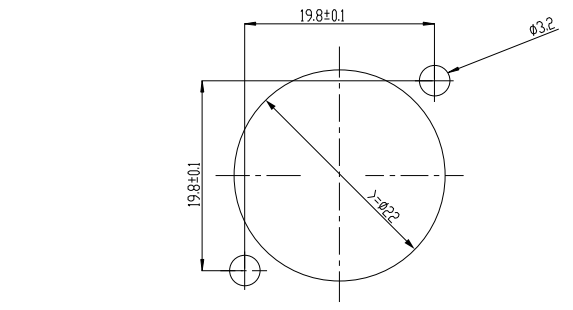


Recommended PCB Footprint
Mounting Holes – Component Side



Recommended Panel Cutout

DIMENSIONS ARE IN MILLIMETERS					APPROVED	DATE	<h1 style="margin: 0;">Io Audio Technologies</h1> <p style="margin: 0;">DESCRIPTION</p> <p style="margin: 0;">ETHERLATCH B SERIES 8P8C CHASSIS CONNECTOR, HORIZONTAL PCB</p> <p style="margin: 0;">PART NO. IO-EL8-F-BH</p> <p style="margin: 0;">REV. A</p>
UNLESS OTHERWISE SPECIFIED TOLERANCES					CHECKED	DATE	
ANGLES = ±5°					DRAWN	DATE	
UP TO 6 = ±0.2							
6	Ground Terminal	H62	Nickel Plated Copper Brass	1			
5	Latch Push Button	65Mn	Nickel Plated Carbon Steel	1			
4	Faceplate	ZnAl4-0	Nickel Plated Aluminum	1			
3	Contact Pins	QSn6.5-0.1	Gold Plated Phosphor Bronze	8			
2	Body Shell	PA (UL94 V-0)	Black	1			
1	Latch Catch	65Mn	Nickel	1			
NO.	ITEM	MATERIAL	FINISH	QTY	THIRD_ANGLE		
					SCALE	1/1	

A

A