

6	Pin 1	H62	Gold	1	
5	Pin 2	H62	Gold	1	
4	Pin 3	H62	Gold	1	
3	Ground Terminal	H62	Nickel	1	
2	Contact Housing	PA	Black	1	
1	Latch Release	H62	Nickel	1	
NO.	DESCRIPTION	MATERIAL	FINISH	Q'TY	

DIMENSIONS ARE IN MILLIMETERS	
UNLESS OTHERWISE SPECIFIED	
TOLERANCES	
ANGLES = ±5°	
UP TO 6 = ±0.2	
6-40 = ±0.4	
40-120 = ±0.6	
120-315 = ±1	
ABOVE 315 = ±1.6	
THIRD_ANGLE	
SCALE	1.5/1

APPROVED	DATE
CHECKED	DATE
DRAWN	DATE

<h1>Io Audio Technologies</h1>			
Description			
EV Series 3 Pin Female XLR Chassis Connector			
PART NO.	IO-XLR3-F-EV	REV.	A1

1 2 3 4 5 6 7 8

F

E

D

C

B

A

F

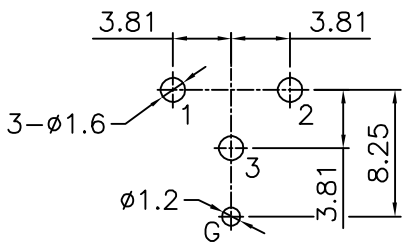
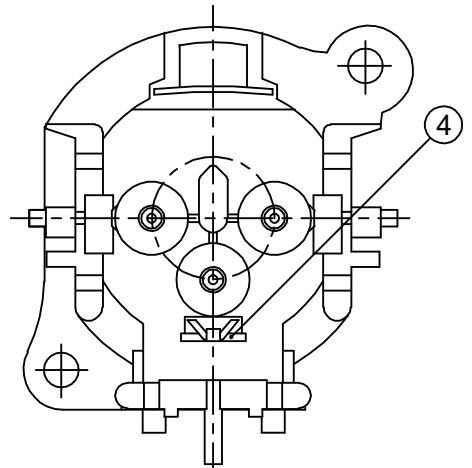
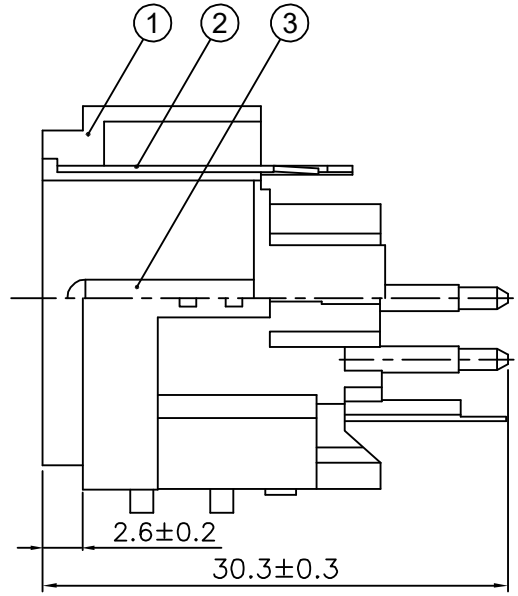
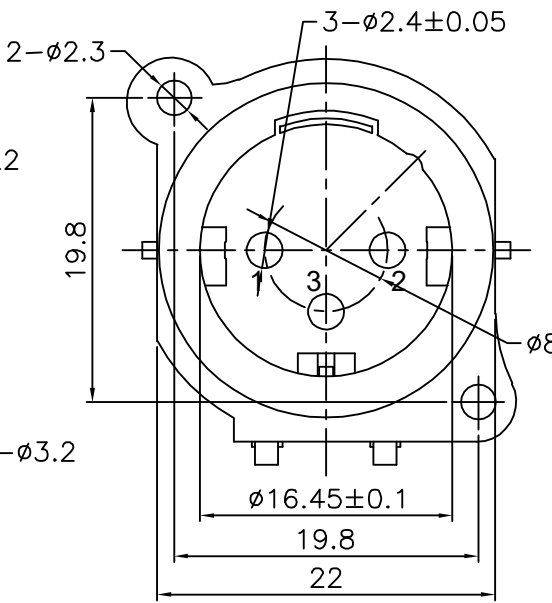
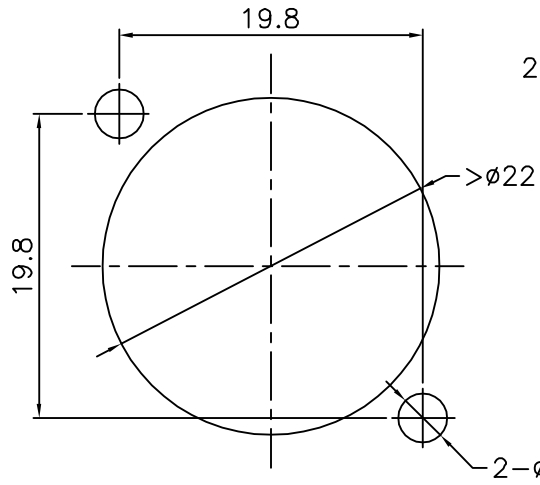
E

D

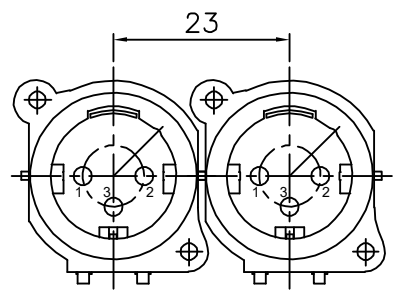
C

B

A



Recommended PCB Footprint



SCALE 1:2

NO.	DESCRIPTION	MATERIAL	FINISH	Q'TY
4	Ground Pin	H62	Nickel	1
3	Signal Pins	H59-1	Gold	3
2	Latch Catch	65Mn	Nickel	1
1	Contact Housing	PA (94V-0)	Black	1

DIMENSIONS ARE IN MILLIMETERS	
UNLESS OTHERWISE SPECIFIED TOLERANCES	
ANGLES = ±5'	
UP TO 6 = ±0.2	
6-40 = ±0.4	
40-120 = ±0.6	
120-315 = ±1	
ABOVE 315 = ±1.6	
THIRD_ANGLE	
SCALE	2/1

APPROVED	DATE
CHECKED	DATE
DRAWN	DATE

Io Audio Technologies			
Description			
EV Series 3 Pin Male XLR Chassis Connector			
PART NO.	IO-XLR3-M-EV	REV.	A2

1 2 3 4 5 6 7 8