



AUDIO
TECHNOLOGIES®

MINI XLR CHASSIS CONNECTOR

4 Pin Tiny XLR Female Panel Mount Connector

Locking 4 pin connectors with rugged metal shells for wireless systems, industrial automation, and test equipment. Designed for high RF environments.



IO-TXLR4-F-JLX

SPECIFICATIONS

PRODUCT

Gender: **Female**

Contacts: **4**

ELECTRICAL

Contact Resistance: $\leq 0.05 \Omega$

Insulation Resistance: $> 1 \text{ G}\Omega$

Dielectric Strength: **1000V @ 60s**

Current Rating: **5A / 50V AC**

Ground Pin: **Separate Ground Pin. Grounds Panel and Mating Connector Shell**

ENVIRONMENTAL

Standard Compliance: **IEC 61076-2-103**

UL Flammability: **UL94V-0**

Temperature Range: **-40°C ~ +70°C (-40°F ~ +158°F)**

MECHANICAL

Lifetime: **> 1000 Mating Cycles**

Wiresize: **0.50mm Max O.D.**

Wiring: **Solder Contacts**

Locking Device: **Latch Lock**

Mounting Direction: **Front**

Solderability: **Complies with IEC 60068-2-20**

MATERIAL

Pins: **Phosphor Bronze**

Pin Plating: **Gold**

Grounding Terminal: **Phosphor Bronze**

Grounding Terminal Plating: **Gold**

Shell: **Zinc Alloy**

Shell Finish: **Nickel**

Push Button: **Stainless Steel**

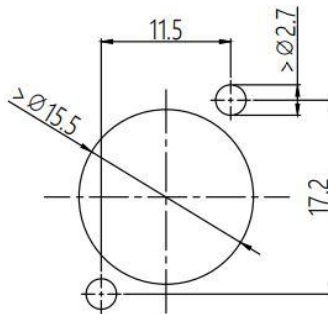
Push Button Finish: **Nickel**

Latch: **Stainless Steel**

Product specifications may change without prior notification



Panel Cutout



PART NUMBER BREAKDOWN:

IO-**TXLR**4-F-JLX
Tiny XLR
IO-TXLR**4**-F-JLX
Number of Pins
IO-TXLR4-**F**-JLX
Gender
IO-TXLR4-F-**JLX**
Series Identifier

STANDARDS & CLASSIFICATIONS



Product specifications may change without prior notification