

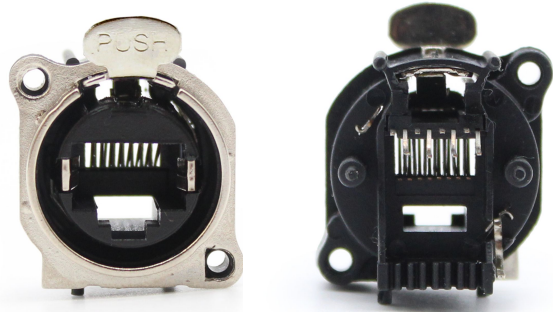


AUDIO  
TECHNOLOGIES®

## ETHERLATCH CHASSIS CONNECTORS

### B SERIES

IO-EL8-F-BV



### SPECIFICATIONS

#### PRODUCT

Gender: **Female**

Contacts: **8**

#### ELECTRICAL

Contact Resistance: **< 10 mΩ**

Frequency Range: **1 - 100MHz**

Insulation Resistance: **≥ 500 MΩ**

Dielectric Strength: **1000V @ 60s**

Current Rating Per Contact: **1.5 A**

Rated Voltage: **50 V**

Transmission Performance: **Cat 5e**

Grounding: **Separate Ground Terminal. Grounds to Mating Connector Shell**

#### ENVIRONMENTAL

Standard Compliance: **TIA/EIA 586B, IEC 11801**

UL Flammability Rating: **UL94 V-0**

Temperature Range: **-30°C ~ +80° C (-22°F ~ +176°F)**

#### MECHANICAL

Lifetime: **> 1000 Mating Cycles**

Insertion Force: **≤ 20 N**

Wiring: **Horizontal PCB Mount**

Locking Device: **Latch Lock**

Mounting Direction: **Rear**

Solderability: **Complies with IEC 60068-2-20**

#### MATERIAL

Contacts: **Bronze**

Contact Plating: **Gold**

Shell: **Polyamide**

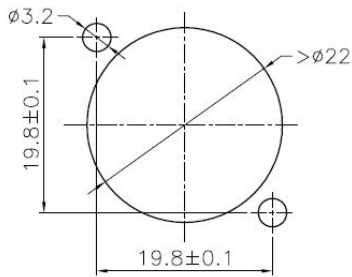
Shell Finish: **Black**

Faceplate: **Zinc**

Faceplate Finish: **Nickel**

Product specifications may change without prior notification

## Panel Cutout



## FEATURES & APPLICATIONS

B Series Etherlatch chassis connectors offer the most cost-effective solution for design-in applications where the termination method is to a printed circuit board. The small footprint makes this our Etherlatch receptacle with the highest packing density available. These connectors feature a compact, all plastic housing with a nickel plated faceplate. Precision machined, one piece, gold plated contacts are standard to help prolong the useful life of the connectors. The compact form factor of these connectors makes them perfect for situations where space saving is a priority or space for a connector is limited.

Available for vertical or horizontal PCB mounting designs.

### PART NUMBER BREAKDOWN

IO-**EL**8-F-BV

Connector Type

IO-EL**8**-F-BV

Number of Pins

IO-EL8-F-**E**-BV

Gender

IO-EL8-F-B-**V**

Series Identifier

IO-EL8-F-B-**V**

H: Horizontal PCB Mount

V: Vertical PCB Mount

### STANDARDS & CLASSIFICATIONS



Product specifications may change without prior notification